

RAM *Clutches*

Dual Discs | Clutch Sets | Components | Hydraulics



Forty years of innovation and excellence



PERFORMANCE CLUTCH SETS

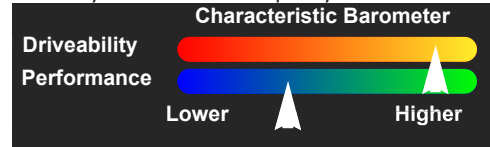


HDX CLUTCH SETS

GREAT DRIVEABILITY AND PERFORMANCE TO 450 HORSEPOWER

The basic RAM concept of clutch performance is simple: Increased clamp pressure is the single most effective way to manage high horsepower or load, especially in street driven performance cars. We purpose build RAM HDX pressure plates with 30% more clamp pressure than stock. The second important feature is smooth, chatter free operation, which we achieve with premium organic composite disc friction material. Also, HDX discs feature our exclusive 8-spring hub assembly for added load capacity. HDX. Great driveability and control for power

levels to 450 horsepower. Sets include pressure plate, disc, release bearing, and alignment tool unless otherwise noted.



POWERGRIP CLUTCH SETS

MUSCLE CAR PERFORMANCE TO 550 HORSEPOWER

As power levels move up to and beyond 500 horsepower, RAM POWERGRIP meets the challenge with a combination of organic and metallic disc friction surfaces that effectively increase the clutch capacity to the 550 horsepower level. The 8-spring hub is equipped with RAM POLYCOIL damper springs encapsulated in polyurethane. This spring can handle three times the shock load of just the coil spring, and is standard in all RAM competition discs. The RAM Competition pressure plate in this kit provides 30% more clamp pressure than stock, and meets SFI specifications. At this high level of performance RAM POWERGRIP provides surprisingly good driving characteristics with smooth,

comfortable driver control. Sets include pressure plate, disc, release bearing, and alignment tool unless otherwise noted.



POWERGRIP HD CLUTCH SETS

STREET AND COMPETITION PERFORMANCE TO 650 HORSEPOWER

POWERGRIP HD is a true "strip/street" competition clutch system that can handle the rigors of weekend racing and spirited street driving. This system has the same components as standard POWERGRIP above with the exception that the disc friction surfaces are both sintered iron. Sintered iron provides a degree of slippage on vehicle launch to prevent the violent and uncontrollable engagement characteristics of paddle type metallic discs. This firm consistent engagement is easy to control. Some chatter is likely on engagement with rear gearing less than 3.73 in street applications. Each set includes the pressure plate, clutch disc, release bearing,

and alignment tool unless otherwise noted. Use Powergrip HD for power levels to 650 horsepower, or lower powered vehicles that see frequent track duty.



KEY FEATURE:



All RAM performance discs feature an 8 spring hub with composite urethane coated springs for extended center hub life.

OEM REPLACEMENT SETS

Replacement clutch sets are listed in the application section in the first column. These are stock units not intended for competition.



Let's face it - there are many dual disc clutches to choose from. So how do you decide? Consider this - RAM Clutches is the only manufacturer that cut it's teeth in the multi-disc market by building racing clutches. Our Pro Stock and Pro Modified clutches are the industry standard for record setting performance and wins. Instead of trying to 'build up' a clutch system for the street, we can 'trickle down' technology from our racing experience to give you a clutch system that is street friendly and also stands up to the rigors of track use. And just like our racing clutches, we offer options to fit the proper clutch to your application; whether it is primary street driving, a combination, or all out track performance. There really is a difference... just ask our racing customers!

'For 16 years, Every Mountain Motored Pro Stock Champion has relied on a RAM multi-disc clutch system...'



Force^{9.5}

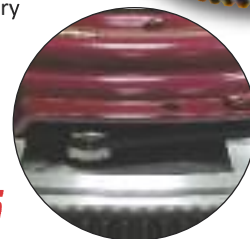
The RAM Force 9.5 is the ideal entry level dual disc clutch for street use. For use in the 400-700 ft/lb range and a with moderate clamp pressure, it will handle small blower or turbo installations and provide a light pedal effort similar to the stock clutch. In fact, drivers of our Gen 5 Camaro test vehicle were not able to tell that the stock clutch was changed at all! The floater plate is driven from three sets of straps that eliminate any floater plate rattle at idle. The top clutch disc features a sprung hub assembly that absorbs the initial engagement of the clutch and reduces the chance of chatter on takeoff. This clutch is compatible with factory hydraulic release mechanisms except as noted in the application guide. It is compatible with all factory master cylinder systems when used in conjunction with a RAM hydraulic release bearing. All RAM dual disc systems include an aluminum flywheel for direct fit.



Fully strapped floater

Force^{10.5}

For applications in the 400-900 ft/lb range, the Force 10.5 dual disc is the natural choice. Based on the design of the original RAM Street Dual, Force 10.5 is more street friendly by using a three strap system to locate the floater plate. This eliminates floater plate 'rattle' that is common on stand driven dual disc clutches. A high clamp load pressure plate assures plenty of holding power without excessive pedal pressure. Steel backed 300 series facing mean smooth engagement on takeoff and insure long service life. For higher torque capacities up to 1300 ft/lb, the Force 10.5N features the proven RAM 900 series metallic facings. Force 10.5 dual disc systems handle bigger torque loads and are a bit heavier than their smaller cousins. This higher inertia translates into better low speed driveability in heavier vehicles, or in large camshaft profile applications. All RAM dual disc systems include an aluminum flywheel for direct fit. If you are bolting on a larger blower or turbo system, Force 10.5 may be the best choice for you.



Stand driven floater

RTrack^{10.5}

The RAM RTrack Dual is modeled after our highly successful drag racing clutches used in high horsepower Pro Stock and Pro Modified applications. The major difference between these clutches and the Force 10.5 is the floater drive system. RTrack Dual uses a stand driven floater plate, which provides higher torque capacity and negative load capacity for vehicles that see more use at the track. It uses a 2400 pound clamp load pressure plate for good holding power without excessive pedal effort, and features 300 series sprung hub top disc and solid hub bottom disc for smooth engagement. A 900 series disc version is available for higher torque load applications up to about 1300 foot pounds. Expect some floater plate noise at idle with this unit's drive system. If you need the ultimate in holding power and durability for street, strip, or road course, the RTrack Dual is for you!



BILLET STEEL AND ALUMINUM FLYWHEELS



The flywheel accepts one half of the load of the clutch system. To realize the potential of the clutch system, the flywheel must be flat, parallel to the crankshaft flange, properly surface ground for maximum friction compatibility with the clutch disc, and balanced. Dyno testing proves that flywheel balance is critical to achieving maximum engine service. Every RAM flywheel is dynamically balanced to within ½ ounce/inch of the factory specification. RAM aluminum flywheels have a .250 inch thick steel friction insert to handle the heat generated under extreme conditions, while allowing resurfacing without the need to replace the insert. All RAM flywheels are manufactured from SFI certified materials in our South Carolina facility.

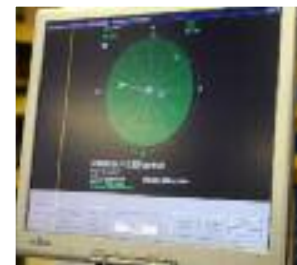
KEY FEATURES:



In house CNC production



Surface grind



Precision balance

CRATE ENGINE FLYWHEELS

See applications for specific vehicle listings

ENGINE	APPLICATION NOTES	BAL.	DIA.	TEETH	FITS BOLT PATTERNS	STEEL	WT.	ALUMINUM WT.	BOLTS	
CHEVROLET										
350/290HP	EARLY 290 HP (2 PC. MAIN SEAL)	INT	14.2	168	10.5", 11" B&B, DIAPH. , 11" LONG	1501	33	2501	18	575
350 ZZ4	10.5" CLUTCH FLYWHEEL	EXT	12.8	153	10.5", B&B, DIAPH.	1509	26	2509	16	575
	11" CLUTCH FLYWHEEL	EXT	14.2	168	10.5", 11" B&B, DIAPH. , 11" LONG	1530	33	2530	18	575
350	RAMJET FI	EXT	14.2	168	10.5", 11" B&B, DIAPH. , 11" LONG	1530	33	2530	18	575
383,383ZZ	FASTBURN & ZZ 10.5" CLUTCH	EXT	12.8	153	10.5", B&B, DIAPH.	1509	26	2509	16	575
	FASTBURN 11" CLUTCH	EXT	14.2	168	10.5", 11" B&B, DIAPH. , 11" LONG	1530	33	2530	18	575
454,502	INCL. RAMJET	EXT	14.2	168	10.5", 11" B&B, DIAPH. , 11" LONG	1532	33	2532	18	575
ZZ572		INT	14.2	168	10.5", 11" B&B, DIAPH. , 11" LONG	1501	33	2501	18	575
LS1,2,6,7	FLAT FLYWHEEL	INT	14.2	168	FACTORY METRIC, 11" DIAPH	1550	33	2550	18	528
LS2, 6	STEPPED FLYWHEEL	INT	14.2	168	FACTORY METRIC	-	-	2552	19	528
LSX	FLAT FLYWHEEL	INT	14.2	168	FACTORY METRIC, 11" DIAPH	1558F	29	2558F	18	-
LS9	FLAT FLYWHEEL	INT	14.2	168	FACTORY METRIC, 11" DIAPH	1553F	29	2553F	18	-
350 LT1	EARLY BLOCK TO 93-97 T56 TRANS.	INT	12.8	153	OEM PULL TYPE	-		2555	20	575
MOPAR										
VERIFY CRANK PATTERN AND INTERNAL BALANCE										
8 CYL	6 BOLT CRANK PATTERN (EXC. 360)	INT	13.2	130	10.5" B&B, DIAPH.	1503	28	2503	17	575
8 CYL	8 BOLT CRANK PATTERN (EXC. 360)	INT	13.2	130	10.5" B&B, DIAPH.	1503	28	2503	17	596
5.7/6.1L	8 BOLT CRANK LATE HEMI TO 6 SPEED	INT	13.2	130	10.5" B&B, DIAPH.	1585	28	2585	17	-
5.7/6.1L	8 BOLT CRANK LATE HEMI TO 4 SPEED	INT	13.2	130	10.5" B&B, DIAPH.	1588	29	2588	18	-
* 360 ENGINE IS EXTERNAL BALANCE. SPECIAL ORDER ONLY.										
FORD										
302/5.0L	50 OZ BALANCE	EXT	13.3	157	10.5" FORD DIAPH.	1525	24	2525	14	575
	FOR 11" CLUTCH 50 OZ BAL.	EXT	14.2	164	10.5" FORD DIAPH., 11" LONG	1506	33	2506	17	575
351/5.8L	28 OZ. BALANCE	EXT	13.3	157	10.5" FORD DIAPH.	1527	24	2527	14	575
	FOR 11" CLUTCH 28 OZ BAL.	EXT	14.2	164	10.5", 11" LONG	1505	33	2515	17	575
460,514	24.2 OZ BALANCE 176 TOOTH	EXT	15.5	176	11", 11.5", 12" LONG	1517B	35	2517B	20	575
	24.2 OZ BALANCE 184 TOOTH	EXT	15.5	184	11", 11.5", 12" LONG	1517	35	2517	20	575

HYDRAULIC RELEASE BEARINGS

RAM hydraulics offer flexibility in setting up the clutch release system on your early or late model performance car or truck. HD versions offer the upmost in durability and long life over factory hydraulic systems. Full adjustability means easy setup with any aftermarket clutch, single or dual disc.

RAM hydraulic bearings offer an efficient method of setting up a clutch release system in street, restoration, and resto-mods. Bearing assemblies are available for 'universal' applications including Muncie, Saginaw, Borg Warner, Tremec, and T56/6060 transmissions. A new HD version includes larger o-rings and backup rings for better strength and durability in street driven vehicles.



For late model performance vehicles such as Camaro, Corvette, and Mustang, RAM offers hydraulic bearing kits that include the HD bearing assembly plus all of the lines, fittings, and adapters required to connect the bearing to the factory master cylinder. Increased travel, quicker release and engagement, and adjustability to suit any clutch system in single or dual disc make RAM bearings an excellent choice for your late model muscle car. **Specific applications are listed in the application section of this catalog.**

Bearing position adjustment is easily achieved with the RAM pedal adjustment system PN 78300. Some factory and aftermarket clutches have a very high engagement point on the pedal that is not comfortable for most drivers. By installing the RAM adjuster inline with your factory or aftermarket hydraulic bearing, the pedal position can be moved down to a more comfortable driving position. A bonus feature of this adjuster is the ability to control the release distance of the clutch, preventing overtravel of the clutch fingers which can lead to the clutch 'sticking' at higher engine RPMs.



The RAM bearing adjuster will NOT increase bearing travel. It lets you limit or reduce travel length. Plumbing the adjuster to factory hydraulics requires adapting the factory feed line to the -3an fitting on the adjuster, or replacing the factory line with a teflon -3an line.

UNIVERSAL APPLICATIONS	PN	UNIVERSAL APPLICATIONS	PN
FORD T5 TRANSMISSION	78130	GM, FORD FACTORY MASTER ADAPTER	78017
FORD TREMEC TRANSMISSION	78132	FEED LINE KIT 10-UP CAMARO, 05-UP MUSTANG	78350
FORD MUSTANG 05-08 GT500	78175	TEFLON LINE 18" -3AN STRAIGHT/STRAIGHT	78322
GM UNIVERSAL , EARLY GM 3 & 4 SPEEDS, GM T5	78125HD	TEFLON LINE 36" -3AN STRAIGHT/STRAIGHT	78324
GM UNIVERSAL AFTERMARKET T56 TRANSMISSION	78160	TEFLON LINE 18" -3AN STRAIGHT TO 90	78326
T56 0.156" STEEL SPACER SHIM	598	TEFLON LINE 36" -3AN STRAIGHT TO 90	78328
T56 0.500" ALUMINUM SPACER PLATE	78511	CONICAL SHIM SET FOR BEARING ADJUSTMENT	78330
T56 0.750" ALUMINUM SPACER PLATE	78513	REPLACEMENT O RING KIT (.138" dia rings)	78509
RAM PEDAL HEIGHT ADJUSTMENT KIT	78300	REPLACEMENT O-RING KIT (.068" dia rings)	78505
REPLACEMENT BEARING ONLY	78017	REPLACEMENT BLEED LINE KIT	78510

ENGINE	YEARS	APPLICATION	OEM SET	HDX SET	POWERGRIP SET	POWERGRIP HD SET	STEEL FW	ALUMINUM FW	SIZE/SPLINE
--------	-------	-------------	---------	---------	---------------	------------------	----------	-------------	-------------

AMERICAN MOTORS

AMX, JAVELIN

ALL	66 70	287,343,360, 390 C.I. 4 SPEED	88499	88499HDX	98499	98499HD	-	-	10.5, 1 1/8-10
401	72 74	4 SPEED 4 BBL	88772	88772HDX	98772	98772HD	-	-	10.5, 1 1/8-10

CADILLAC

CTS-V

ALL	04 07	REQUIRES RAM FLYWHEEL	-	88931HDX*	98931*	98931HD*	1550	2550	11, 1 1/8-26
ALL	04 07	12" OPTION REQ. RAM FLYWHEEL	-	88935	98935	98935HD	1550	2550	11, 1 1/8-26

* Requires RAM flywheel #1550 or 2550. Requires .500" spacer plate RAM PN 78511 using OEM slave/bearing. Release bearing not included.

** RAM Hyd. Bearing #78170 recommended. If using OEM slave/bearing, spacer plate RAM PN 78511 required.

CHEVROLET

CAMARO 6 CYL.

3.6L	10 12		88995	TBA	TBA	TBA	TBA	TBA	10.5, 1 1/8-26
3.8L	96 02		88900	-	98900	98900HD	-	-	9 3/4, 1 1/8-26

CAMARO 8 CYL.

6.2	10 12		-	88931HDX	98931*	98931HD*	1550	2550	11, 1 1/8-26
6.2	12	ZL-1 oem is dual disc	-	-	-	-	-	-	10, 1 1/8-26
6.2	10 12	12" OPTION REQ. RAM FLYWHEEL	-	88935	98935	98935HD	1550	2550	11, 1 1/8-26
5.7L	98 02	ALL	88931	88931HDX	98931**	98931HD**	1550	2550	11, 1 1/8-26
5.7L	98 02	12" OPTION	-	88935	98935	98935HD	1550	2550	11, 1 1/8-26
5.7L	93 97		88516	88516HDX	98516	98516HD	-	2554	11, 1 1/8-26
5.0L	82 92	ALL	88730	88730HDX	98730	98730HD	1530	2530	10.5, 1 1/8-26
5.0L	79 81	ALL EXC. Z-28	88760	88760HDX	98760	98760HD	1511	2511	10.5, 1 1/8-10
5.0L	81	Z-28	88764	88764HDX	98764	98764HD	1501	2501	11, 1 1/8-26
305	77	ALL	88764	88760HDX	98760	98760HD	1511	2511	10.5, 1 1/8-10
307	68 73	ALL	88764	88760HDX	98760	98760HD	1511	2511	10.5, 1 1/8-10
350	77 81	4 SPEED M-21 TRANS.	88760	88764HDX	98764	98764HD	1501	2501	11, 1 1/8-26
350	77 79	4 SPEED M-20 TRANS.	88762	88760HDX	98760	98760HD	1511	2511	10.5, 1 1/8-10
350	71 77	ALL W/11" CLUTCH	88764	88764HDX	98764	98764HD	1501	2501	11, 1 1/8-26
350	69 77	ALL W/ 10.5" CLUTCH	88760	88760HDX	98760	98760HD	1511	2511	10.5, 1 1/8-10
396	71	4 SPEED M-21 TRANS.	88760	88764HDX	98764	98764HD	1501	2501	11, 1 1/8-26
400	77	ALL	88760	88764HDX	98764	98764HD	1501	2501	11, 1 1/8-26
ALL	67 70	283,302,327 C.I.	88764	88760HDX	98760	98760HD	1511	2511	10.5, 1 1/8-10
ALL	67 69	350,396 C.I., W/11" CLUTCH	88760	88762HDX	98762	98762HD	1501	2501	11, 1 1/8-10

*RAM hydraulic bearing 78180 required

**RAM hydraulic bearing 78165 and/or adjustable master cylinder 510 recommended

CHEVELLE, MALIBU, EL CAMINO

ALL	64 81	4.4L, 5.0L, 283, 307, 327	88760	88760HDX	98760	98760HD	1511	2511	10.5, 1 1/8-10
350	67 72	W/ 11" CLUTCH, 10 SPLINE	88762	88762HDX	98762	98762HD	1501	2501	11, 1 1/8-10
350	71 72	W/ 11" CLUTCH, 26 SPLINE	88764	88764HDX	98764	98764HD	1501	2501	11, 1 1/8-26
350	69 81	W/ 10.5" CLUTCH	88760	88760HDX	98760	98760HD	1511	2511	10.5, 1 1/8-10
396	66 70	W/ 11" CLUTCH	88762	88762HDX	98762	98762HD	1501	2501	11, 1 1/8-10
402	72	ALL W/ 10 SPLINE INPUT	88762	88762HDX	98762	98762HD	1501	2501	11, 1 1/8-10
454	70 74	ALL W/ 26 SPLINE INPUT	88764	88764HDX	98764	98764HD	1521	2521	11, 1 1/8-26

COBALT, COLBALT SS

2.4L	05 07	ALL	-	90-1500*	-	90-1500C*	-	-	8 7/8, 1 1/8-26
------	-------	-----	---	----------	---	-----------	---	---	-----------------

*Complete set including aluminum flywheel

CORVETTE

6.2	05 12	REQUIRES RAM FLYWHEEL	-	88931HDX	98931	98931HD	1550	2550	11, 1 1/8-26
6.2	11 12	ZR-1	-	-	-	-	1553	2553	10, 1 1/8-26
6.2	05 12	12" OPTION REQ. RAM FLYWHEEL	-	88935	98935	98935HD	1550	2550	12, 1 1/8-26
5.7L	97 04	ALL	88931	88931HDX	98931**	98931HD**	1550	2550	11, 1 1/8-26
5.7L	97 04	12" OPTION REQ. RAM FLYWHEEL	88931	88935	98935	98935HD	1550	2550	12, 1 1/8-26
5.7L	94 96	LT1, LT4 ENG. (BRG. W/ COVER)	88483	90-0810*	-	90-0810N*	-	-	11, 1 1/8-26
5.7L	94 96	ZR1, LT5 ENG. (BRG. W/ COVER)	88482	90-0830*	-	90-0830N*	-	-	11, 1 1/8-26
5.7L	92 93	LT1 ENG. (BRG. W/ COVER)	88517	90-0800*	-	90-0800N*	-	-	11, 1 1/8-26
5.7L	89 93	ZR-1, LT5 ENG. DMF005	88481	90-0820*	-	90-0820N*	-	-	11, 1 1/8-26
5.7L	89 92	6 SPEED L98 ENG. DMF008	88517	90-0800*	-	90-0800N*	-	-	11, 1 1/8-26
5.7L	85 88	350 C.I. ENGINE	88640	USE 98640	98640	98640HD	-	-	10.5, 1 1/8-26
5.7L	84	350 C.I. ENGINE	88761	88761HDX	98761	98761HD	1501	2501	10.5, 1 1/8-26
350	69 70	W/ 11" CLUTCH	88762	88762HDX	98762	98762HD	1501	2501	11.0, 1 1/8-10
350	69 71	W/ 10.5" CLUTCH	88760	88760HDX	98760	98760HD	1511	2511	10.5, 1 1/8-10
350	72	W/26 SPLINE INPUT	88761	88761HDX	98761	98761HD	1511	2511	10.5, 1 1/8-26
350	73 81	ALL	88764	88764HDX	98764	98764HD	1501	2501	11, 1 1/8-26

AMERICAN MOTORS

AMX, JAVELIN

ALL	66	70	-	-	-	-	-	-	BU74	78125HD	03-001
401	72	74	-	-	-	-	-	-	BU77	78125HD	-

CADILLAC

CTS-V

ALL	04	07	75-2100**	75-2100N**	80-2100**	80-2100N**	90-2100**	90-2100N**	BA381	78170	03-013
ALL	04	07	75-2100**	75-2100N**	80-2100**	80-2100N**	90-2100**	90-2100N**	BA381	78170	03-013

CHEVROLET

CAMARO 6 CYL.

3.6L	10	12	TBA	TBA	TBA	TBA	TBA	TBA	TBA	-	03-013
3.8L	96	02	-	-	-	-	-	-	BA82	-	03-013

CAMARO 8 CYL.

6.2	10	12	75-2100	75-2100N	80-2100*	80-2100N*	90-2100*	90-2100N*	BA381	78180	03-013
6.2		12	75-2115	75-2115N	80-2115*	80-2115N*	90-2115*	90-2115N*	BA222	78180	03-013
6.2	10	12	75-2100	75-2100N	80-2100*	80-2100N*	90-2100*	90-2100N*	BA222	78180	03-013
5.7L	98	02	75-2100**	75-2100N**	80-2100**	80-2100N**	90-2100**	90-2100N**	BA381	78165	03-013
5.7L	98	02	75-2100**	75-2100N**	80-2100**	80-2100N**	90-2100**	90-2100N**	BA222	78165	03-013
5.7L	93	97	-	-	-	-	-	-	BA381	-	03-013
5.0L	82	92	75-2155	75-2155N	80-2155	80-2155N	90-2155	90-2155N	BU656	78125HD	03-013
5.0L	79	81	75-2122	75-2122N	80-2122	80-2122N	90-2122	90-2122N	BU656	78125HD	03-001
5.0L		81	75-2125	75-2125N	80-2125	80-2125N	90-2125	90-2125N	BU656	78125HD	03-013
305		77	75-2122	75-2122N	80-2122	80-2122N	90-2122	90-2122N	BU656	78125HD	03-001
307	68	73	75-2122	75-2122N	80-2122	80-2122N	90-2122	90-2122N	BU656	78125HD	03-001
350	77	81	75-2125	75-2125N	80-2125	80-2125N	90-2125	90-2125N	BU656	78125HD	03-013
350	77	79	75-2122	75-2122N	80-2122	80-2122N	90-2122	90-2122N	BU656	78125HD	03-001
350	71	77	75-2125	75-2125N	80-2125	80-2125N	90-2125	90-2125N	BU656	78125HD	03-013
350	69	77	75-2122	75-2122N	80-2122	80-2122N	90-2122	90-2122N	BU656	78125HD	03-001
396		71	75-2125	75-2125N	80-2125	80-2125N	90-2125	90-2125N	BU656	78125HD	03-013
400		77	75-2125	75-2125N	80-2125	80-2125N	90-2125	90-2125N	BU656	78125HD	03-013
ALL	67	70	75-2122	75-2122N	80-2122	80-2122N	90-2122	90-2122N	BU656	78125HD	03-001
ALL	67	69	75-2120	75-2120N	80-2120	80-2120N	90-2120	90-2120N	BU656	78125HD	03-001

CHEVELLE, MALIBU, EL CAMINO

ALL	64	81	75-2122	75-2122N	80-2122	80-2122N	90-2122	90-2122N	BU656	78125HD	03-001
350	67	72	75-2120	75-2120N	80-2120	80-2120N	90-2120	90-2120N	BU656	78125HD	03-001
350	71	72	75-2125	75-2125N	80-2125	80-2125N	90-2125	90-2125N	BU656	78125HD	03-013
350	69	81	75-2122	75-2122N	80-2122	80-2122N	90-2122	90-2122N	BU656	78125HD	03-001
396	66	70	75-2120	75-2125N	80-2120	80-2120N	90-2120	90-2120N	BU656	78125HD	03-001
402		72	75-2120	75-2125N	80-2120	80-2120N	90-2120	90-2120N	BU656	78125HD	03-001
454	70	74	75-2135	75-2135N	80-2135	80-2135N	90-2135	90-2135N	BU656	78125HD	03-013

COBALT, COLBALT SS

2.4L	05	07	-	-	-	-	-	-	-	-	-
------	----	----	---	---	---	---	---	---	---	---	---

CORVETTE

6.2	05	12	75-2100	75-2100N	80-2100***	80-2100N***	90-2100***	90-2100N***	BA381	78170	03-013
6.2	11	12	75-2115	75-2115N	80-2115***	80-2115N***	90-2115***	90-2115N***	-	78170	03-013
6.2	05	12	75-2100	75-2100N	80-2100***	80-2100N***	90-2100***	90-2100N***	-	78170	03-013
5.7L	97	04	75-2100**	75-2100N**	80-2100**	80-2100N**	90-2100**	90-2100N**	BA381	78165	03-013
5.7L	97	04	75-2100**	75-2100N**	80-2100**	80-2100N**	90-2100**	90-2100N**	BA381	78165	03-013
5.7L	94	96	75-2175	75-2175N	-	-	-	-	BU656	incl in kits	03-013
5.7L	94	96	75-2179	75-2179N	-	-	-	-	BU656	incl in kits	03-013
5.7L	92	93	75-2173	75-2173N	-	-	-	-	BU656	incl in kits	03-013
5.7L	89	93	75-2177	75-2177N	-	-	-	-	BU656	incl in kits	03-013
5.7L	89	92	75-2173	75-2173N	-	-	-	-	BU656	incl in kits	03-013
5.7L	85	88	-	-	-	-	-	-	BU656	78125HD	03-013
5.7L		84	75-2125	75-2125N	80-2125	80-2125N	90-2125	90-2125N	BU656	78125HD	03-013
350	69	70	75-2120	75-2120N	80-2120	80-2120N	90-2120	90-2120N	BU656	78125HD	03-001
350	69	71	75-2122	75-2122N	80-2122	80-2122N	90-2122	90-2122N	BU656	78125HD	03-001
350		72	75-2127	75-2127N	80-2127	80-2127N	90-2127	90-2127N	BU656	78125HD	03-013
350	73	81	75-2125	75-2125N	80-2125	80-2125N	90-2125	90-2125N	BU656	78125HD	03-013

ENGINE	YEARS	APPLICATION	OEM SET	HDX SET	POWERGRIP SET	POWERGRIP HD SET	STEEL FW	ALUMINUM FW	SIZE/SPLINE
--------	-------	-------------	---------	---------	---------------	------------------	----------	-------------	-------------

CORVETTE (CONT)

396	65	ALL	88762	88762HDX	98762	98762HD	1501	2501	11, 1 1/8-10
427	66 69	W/ 10.5" CLUTCH	88760	88760HDX	98760	98760HD	1511	2511	10.5, 1 1/8-10
427	66 69	W/ 11" CLUTCH	88762	88762HDX	98762	98762HD	1501	2501	11, 1 1/8-10
454	70 74	ALL	88764	88764HDX	98764	98764HD	1521	2521	11, 1 1/8-26
ALL	56 68	265, 283, 327	88760	88760HDX	98760	98760HD	1511	2511	10.5, 1 1/8-10

*Single disc push style conversion system including clutch, flywheel, hydraulic bearing
 **RAM hydraulic bearing 78165 and/or adjustable master cylinder 515 recommended
 ***RAM hydraulic bearing 78170 required

CHEVY II & NOVA 8 CYL.

ALL	64 79	283, 302, 305, 327, 350	88760	88760HDX	98760	98760HD	1511	2511	10.5, 1 1/8-10
396	67 70	EXC. 69 W/ 26 SPLINE INPUT	88762	88762HDX	98762	98762HD	1501	2501	11, 1 1/8-10
396	69	W/26 SPLINE INPUT	88764	88764HDX	98764	98764HD	1501	2501	11, 1 1/8-26
454	71	W/26 SPLINE INPUT	88764	88764HDX	98764	98764HD	1521	2521	11, 1 1/8-26

SSR

6.0L	05 06	ALL	-	88931HDX*	98931*	98931HD*	1550	2550	11, 1 1/8-26
6.0L	05 06	OPTIONAL 12" CLUTCH SET	88935*	88935*	98935*	98935HD*	1550	2550	11, 1 1/8-26

*Requires RAM flywheel 1550 or 2550 and slave spacer 78513

**Requires slave spacer 78513 OR recommended 78170 release bearing

OTHER PASSENGER CARS

ALL	55 85	W/10.4" 1"-10 SPLINE	88760	88760HDX	98760	98760HD	1511	2511	10.5, 1 1/8-10
ALL	55 85	W/11" 1"-10 SPLINE	88762	88762HDX	98762	98762HD	1501	2501	11, 1 1/8-10

CHEVROLET TRUCK

COLORADO

ALL	04 11	2.8L, 2.9L	88996	-	-	-	-	-	9.25, 1 1/8-26
ALL	04 07	3.5L, 3.7L	88997	88997HDX	98997	98997HD	-	-	10.5, 1 1/8-26

S10, S15, BLAZER, PICKUP

4.3L	02 04	262, 6 CYL.	88600	88600HDX	98600	98600HD	-	-	11, 1 1/8-10
4.3L	96 01	262, 6 CYL.	88944	88944HDX	98944	98944HD	-	-	11, 1 1/8-10
4.3L	92 95	262, 6 CYL.	88624	88624HDX	98624	98624HD	-	-	11, 1 1/8-10
4.3L	88 93	W/10.5" CLUTCH, ALSO S10 TO V8 CONVERSION*	88798	88798HDX	98798	98798HD	-	-	10.5, 1-14

*USING 8 CYL. FLYWHEEL

FULL SIZE BLAZER, PICKUP

4.8L	02 06	294, 8 CYL.	88998	88998HDX	98998	98998HD	-	-	11, 1 1/8-10
4.8L	99 01	294, 8 CYL.	88949	88949HDX	98949	98949HD	-	-	11, 1 1/8-10
5.0L	96 99	305, 8 CYL.	88887	88887HDX	98887	98887C	-	-	12, 1 1/8-10
5.0L	88 95	305, 8 CYL.	88624	98624HDX	98624	98624C	-	-	11, 1 1/8-10
5.7L	97 00	350, 8 CYL.	88943	88943HDX	98943	98943HD	-	-	12, 1 1/8-10
5.7L	96	350, 8 CYL.	88887	88887HDX	98887	98887C	-	-	12, 1 1/8-10
5.7L	90 95	350, 8 CYL.	88744	88811	98744	98744C	-	-	12, 1 1/8-10
6.0L	99 00		88985	-	-	-	-	-	11.6, 1 1/8-10
6.0L	01 07		88986	-	-	-	-	-	11.6, 1 1/8-10
7.4L	97 00	454, 8 CYL.	88886	88886HDX	98886HD	98886C	-	-	12, 1 1/8-10
7.4L	96	454, 8 CYL.	88888	88888HDX	98888HD	98888C	-	-	12, 1 1/8-10
7.4L	90 95	454, 8 CYL.	88793	88811	98744	98793C	-	-	12, 1 1/8-10

EARLIER MODEL PICKUP

ALL	60 85	12" CLUTCH	88793	88811	98793	98793C	1501	2501	12, 1 1/8-10
ALL	86 89	12" CLUTCH	88793	88811	98793	98793C	1530	2530	12, 1 1/8-10
ALL	58 85	11" CLUTCH	88762	88762HDX	98762	98762HD	1501	2501	11, 1 1/8-10
ALL	86 92	11" CLUTCH	88762	88762HDX	98762	98762HD	1530	2530	11, 1 1/8-10
ALL	63 76	10.5" CLUTCH, 168 TOOTH FLYWHEEL	88760	88760HDX	98760	98760HD	1511	2511	10.5, 1 1/8-10

DODGE

CHALLENGER

ALL	12	5.9L, 6.1L Factory is dual disc	-	-	-	-	-	-	10, 1 1/8-10
ALL	08 11	5.9L, 6.1L Factory is dual disc	-	-	-	-	-	-	10, 1 1/8-26
318	70 74	6 BOLT CRANK, 130T RING GEAR	88766	88766HDX	98766	98766HD	1503	2503	10.5, 1-23
340	70 74	6 BOLT CRANK, 130T RING GEAR	88766	88766HDX	98766	98766HD	1503	2503	10.5, 1-23
360	73 74	6 BOLT CRANK W/EXT. BALANCE	88773	88773HDX	98773	98773HD	-	-	10.95, 1-23
383	70 72	6 BOLT CRANK, 130T RING GEAR	88773	88773HDX	98773	98773HD	1503	2503	10.95, 1-23
426	70 71	8 BOLT CRANK, 130T RING GEAR	88503	88503HDX	98503	98503HD	1583	2583	10.95, 1 3/16-18
440	70 72	6 BOLT CRANK, 130T RING GEAR	88503	88503HDX	98503	98503HD	1503	2503	10.95, 1 3/16-18

CORVETTE (CONT)

396		65	75-2120	75-2120N	80-2120	80-2120N	90-2120	90-2120N	BU656	78125HD	03-001
427	66	69	75-2122	75-2122N	80-2122	80-2122N	90-2122	90-2122N	BU656	78125HD	03-001
427	66	69	75-2120	75-2120N	80-2120	80-2120N	90-2120	90-2120N	BU656	78125HD	03-001
454	70	74	75-2135	75-2135N	80-2135	90-2135N	90-2135	90-2135N	BU656	78125HD	03-013
ALL	56	68	75-2122	75-2122N	80-2122	80-2122N	90-2122	90-2122N	BU656	78125HD	03-001

CHEVY II & NOVA 8 CYL.

ALL	64	79	75-2122	75-2122N	80-2122	80-2122N	90-2122	90-2122N	BU656	78125HD	03-001
396	67	70	75-2120	75-2120N	80-2120	80-2120N	90-2120	90-2120N	BU656	78125HD	03-001
396		69	75-2125	75-2125N	80-2125	80-2125N	90-2125	90-2125N	BU656	78125HD	03-013
454		71	75-2135	75-2135N	80-2135	80-2135N	90-2135	90-2135N	BU656	78125HD	03-013

SSR

SSR

6.0L	05	06	75-2100**	75-2100N**	80-2100N**	80-2100N**	90-2100**	90-2100N**	BA381	78170	03-013
6.0L	05	06	75-2100**	75-2100N**	80-2100N**	80-2100N**	90-2100**	90-2100N**	BA381	78170	03-013

OTHER PASSENGER CARS

ALL	55	85	75-2122	75-2122N	80-2122	80-2122N	90-2122	90-2122N	BU656	78125HD	03-001
ALL	55	85	75-2120	75-2120N	80-2120	80-2120N	90-2120	90-2120N	BU656	78125HD	03-001

CHEVROLET TRUCK

COLORADO

ALL	04	11	-	-	-	-	-	-	BA222	-	03-013
ALL	04	07	-	-	-	-	-	-	BA222	-	03-013

S10, S15, BLAZER, PICKUP

4.3L	02	04	-	-	-	-	-	-	BA6302	-	03-001
4.3L	96	01	-	-	-	-	-	-	BA6302	-	
4.3L	92	95	-	-	-	-	-	-	BU656	-	03-001
4.3L	88	93	-	-	-	-	-	-	BU656	-	03-001

FULL SIZE BLAZER, PICKUP

4.8L	02	06	-	-	-	-	-	-	BA381	-	03-001
4.8L	99	01	-	-	-	-	-	-	BA381	-	03-001
5.0L	96	99	-	-	-	-	-	-	BA381	-	03-001
5.0L	88	95	-	-	-	-	-	-	BA381	-	03-001
5.7L	97	00	-	-	-	-	-	-	BA381	-	03-001
5.7L		96	-	-	-	-	-	-	BA381	-	03-001
5.7L	90	95	-	-	-	-	-	-	BA381	-	03-001
6.0L	99	00	-	-	-	-	-	-	BA222	-	03-001
6.0L	01	07	-	-	-	-	-	-	BA222	-	03-001
7.4L	97	00	-	-	-	-	-	-	BA381	-	03-001
7.4L		96	-	-	-	-	-	-	BA381	-	03-001
7.4L	90	95	-	-	-	-	-	-	BA381	-	03-001

EARLIER MODEL PICKUP

ALL	60	85	75-2120	75-2120N	80-2120	80-2120N	90-2120	90-2120N	BU656	78125HD	03-001
ALL	86	89	75-2150	75-2150N	80-2150	80-2150N	90-2150	90-2150N	BU656	78125HD	03-001
ALL	58	85	75-2120	75-2120N	80-2120	80-2120N	90-2120	90-2120N	BU656	78125HD	03-001
ALL	86	92	75-2150	75-2150N	80-2150	80-2150N	90-2150	90-2150N	BU656	78125HD	03-001
ALL	63	76	75-2122	75-2122N	80-2122	80-2122N	90-2122	90-2122N	BU656	78125HD	03-001

DODGE

CHALLENGER

ALL		12	75-2375	75-2375N	80-2375	80-2375N	90-2375	90-2375N	-	78185	-
ALL	08	11	75-2370	75-2370N	80-2370	80-2370N	90-2370	902370N	-	78185	-
318	70	74	75-2300	75-2300N	80-2300	80-2300N	90-2300	90-2300N	BU286	-	-
340	70	74	75-2300	75-2300N	80-2300	80-2300N	90-2300	90-2300N	BU286	-	-
360	73	74	75-2300	75-2300N	80-2300	80-2300N	90-2300	90-2300N	BU286	-	-
383	70	72	75-2300	75-2300N	80-2300	80-2300N	90-2300	90-2300N	BU286	-	-
426	70	71	75-2340	75-2340N	80-2340	80-2340N	90-2340	90-2340N	BU286	-	-
440	70	72	75-2310	75-2310N	80-2310	80-2310N	90-2310	90-2310N	BU286	-	-

ENGINE	YEARS	APPLICATION	OEM SET	HDX SET	POWERGRIP SET	POWERGRIP HD SET	STEEL FW	ALUMINUM FW	SIZE/SPLINE
--------	-------	-------------	---------	---------	---------------	------------------	----------	-------------	-------------

CHARGER, PASSENGER CAR

318	66 78	6 BOLT CRANK, 130T RING GEAR	88766	88766HDX	98766	98766HD	1503	2503	10.5, 1-23
340	70 73	6 BOLT CRANK, 130T RING GEAR	88766	88766HDX	98766	98766HD	1503	2503	10.5, 1-23
360	74 77	6 BOLT CRANK W/EXT. BALANCE	88773	88773HDX	98773	98773HD	-	-	10.95, 1-23
383	67 69	6 BOLT CRANK, 143T RING GEAR	88768	88768HDX	98768	98768HD	1595	2595	11, 1-23
383	70 71	6 BOLT CRANK, 130T RING GEAR	88773	88773HDX	98773	98773HD	1503	2503	10.95, 1-23
400	72 78	6 BOLT CRANK, 130T RING GEAR	88773	88773HDX	98773	98773HD	1503	2503	10.95, 1-23
426	66 69	8 BOLT CRANK, 143T RING GEAR	88504	88504HDX	98504	98504HD	1593	2593	11, 1 3/16-18
426	70 72	8 BOLT CRANK, 130T RING GEAR	88503	88503HDX	98503	98503HD	1583	2583	10.95, 1 3/16-18
440	67 69	6 BOLT CRANK, 143T RING GEAR	88504	88504HDX	98504	98504HD	1595	2595	11, 1 3/16-18
440	70 72	6 BOLT CRANK, 130T RING GEAR	88503	88503HDX	98503	98503HD	1503	2503	10.95, 1 3/16-18

VIPER

8.0L	92 13	Systems available on a special order basis. Contact the factory for details.	-	-	-	-	-	-	11, 1 1/8-26
------	-------	--	---	---	---	---	---	---	--------------

DODGE TRUCK

RAM 1500-3500 PICKUP, 8 CYL.

4.7L	05 07	285 8 CYL.	88983	-	-	-	-	-	11, 1 1/18-10
4.7L	02 04	285 8 CYL.	88992	-	-	-	-	-	11, 1 1/18-10
5.2L	01		88983	-	-	-	-	-	11, 1 1/18-10
5.2L	94 00	318, OE IS 11"	88905	-	-	-	-	-	11, 1 1/18-10
5.2L	92 93	318	88542	-	-	-	-	-	11, 1-19
5.2L	88 91	318	88603	98603	98603	98603HD	-	-	11, 1-23
5.2L	77 87	318, W/10 1/2" CLUTCH	88766	88766HDX	98766	98766HD	-	-	10.5, 1-23
5.2L	66 85	318, W/11" CLUTCH	88768	88768HDX	98768	98768HD	-	-	11, 1-23
5.7L	03 08		88958	-	-	-	-	-	12, 1 1/8-10
5.9	94 03	360 GAS, OE IS 11"	88905	-	-	-	-	-	11, 1 1/18-10
5.9L	92 93	360 GAS	88542	-	98542	98542HD	-	-	11, 1-19
5.9L	88 91	360 GAS	88603	88603HDX	98603	98603HD	-	-	11, 1-23
5.9L	71 87	360 GAS	88768	88768HDX	98768	98768HD	-	-	11, 1-23

DIESEL PICKUP

5.9L	01 04	6 SPEED	88947	88947HDX	-	98947HD	1569	-	13, 1 3/8-10
5.9L	94 01	5 SPEED	-	-	-	-	1567	-	12.25, 1 1/4-10
5.9L	94 01	5 SPEED, 13' UPGRADE, REQUIRES #1567 FLYWHEEL	-	88581HDX	-	98581HD	1567	-	13, 1 1/4-10

FORD

FLATHEAD APPLICATIONS

221 / 239	38 48	10.5" Lever type, oe is 9"	-	88505HDX	98505	98505HD	1547**	2547**	10.5" 1 3/8-10
221 / 239	38 48	Diaphragm type, mates w/T5 & toploader	-	88510HDX*	98510*	98510HD*	1547**	2547**	10.5" 1 1/16-10
239 / 255	49 53	10.5" Diaphragm / replaces 10" lever style	-	88518HDX*	98518	98518HD	1549**	2549**	10" 1-10
239 / 255	49 53	Diaphragm type, mates w/T5 & toploader	-	88510HDX*	98510*	98510HD*	1549**	2549**	10.5" 1 1/16-10

* Release bearing not included in kit. Use RAM #485 bearing for pre 86 bellhousings, use RAM #501 bearing for 86 and up bellhousing

* Installation may require modification to fork pivot for correct bearing positioning

NOTE 1: Other clutch combinations possible contact RAM Tech or Website

NOTE 2: Crankshaft bolt plate #540 required for aluminum flywheel installation

FAIRLANE, TORINO, PASSENGER CAR SMALL BLOCK (see big block section for more apps)

ALL	63 74	260, 289, 302	88502	88502HDX	98502	98502HD	1505	2515	10.5, 1 1/16-10
351	68 73	ALL	88769	88769HDX	98769	98769HD	1505	2515	11, 1 1/16-10

MUSTANG 6 CYL.

3.7L	11 12		TBA	-	-	-	-	-	-
4.0L	05 10		88937	-	-	-	-	-	10, 1 1/16-10
3.8L	94 04	ALL	88467	88467HDX	98467	98467HD	-	-	11, 1 1/16-10

MUSTANG 8 CYL.

5.0L	11 12	GT	88955	88955HDX	98955	98955HD	1545	2545	11, 1-23
5.3L	06 10	GT500 factory clutch is dual disc	-	-	-	-	-	-	11, 1 1/8-26
4.6L	05 10	ALL EXC.26 SPL. 6 BOLT FW	88952	88952HDX	98952	98952HD	1540	2540	11, 1 1/16-10
4.6L	05 10	ALL W/ 26 SPL. 6 BOLT FW	88952T	88952HDT	98952T	98952HDT	1540	2540	11, 1 1/8-26
4.6L	99 04	ALL EXC. 26 SPL. 8 BOLT FW	88951	88951HDX	98951	98951HD	1545	2545	11, 1 1/16-10
4.6L	99 04	ALL W/ 26 SPL. 8 BOLT FW	88951T	88951HDT	98951T	98951HDT	1545	2545	11, 1 1/8-26
4.6L	96 00	ALL EXC. 26 SPL. 6 BOLT FW	88794	88794HD	98794	98794HD	1540	2540	10.5, 1 1/16-10
4.6L	96 00	ALL W/ 26 SPL. 6 BOLT FW	88794T	88794HDT	98794T	98794HDT	1540	2540	10.5, 1 1/8-26
5.0L	93 95	ALL EXC. TREMEC TKO TRANS.	88794	88794HD	98794	98794HD	1525	2525	10.5, 1 1/16-10



CHARGER, PASSENGER CAR

318	66	78	75-2300	75-2300N	80-2300	80-2300N	90-2300	90-2300N	BU286	-	-
340	70	73	75-2300	75-2300N	80-2300	80-2300N	90-2300	90-2300N	BU286	-	-
360	74	77	75-2300	75-2300N	80-2300	80-2300N	90-2300	90-2300N	BU286	-	-
383	67	69	75-2300	75-2300N	80-2300	80-2300N	90-2300	90-2300N	BU286	-	-
383	70	71	75-2300	75-2300N	80-2300	80-2300N	90-2300	90-2300N	BU286	-	-
400	72	78	75-2300	75-2300N	80-2300	80-2300N	90-2300	90-2300N	BU286	-	-
426	66	69	75-2340	75-2300N	80-2340	80-2340N	90-2340	90-2340N	BU286	-	-
426	70	72	75-2340	75-2340N	80-2340	80-2340N	90-2340	90-2340N	BU286	-	-
440	67	69	75-2360	75-2360N	80-2360	80-2360N	90-2360	90-2360N	BU286	-	-
440	70	72	75-2310	75-2310N	80-2310	80-2310N	90-2310	90-2310N	BU286	-	-

VIPER

8.0L	92	13	-	-	-	-	-	-	BA207	-	-
------	----	----	---	---	---	---	---	---	-------	---	---

DODGE TRUCK

RAM 1500-3500 PICKUP, 8 CYL.

4.7L	05	07	-	-	-	-	-	-	BA207	-	03-001
4.7L	02	04	-	-	-	-	-	-	BA207	-	03-001
5.2L	01		-	-	-	-	-	-	BA207	-	03-001
5.2L	94	00	-	-	-	-	-	-	BA207	-	03-001
5.2L	92	93	-	-	-	-	-	-	BA207	-	-
5.2L	88	91	-	-	-	-	-	-	BU286	-	-
5.2L	77	87	-	-	-	-	-	-	BU286	-	-
5.2L	66	85	-	-	-	-	-	-	BU286	-	-
5.7L	03	08	-	-	-	-	-	-	-	-	03-001
5.9	94	03	-	-	-	-	-	-	BA207	-	03-001
5.9L	92	93	-	-	-	-	-	-	BA207	-	-
5.9L	88	91	-	-	-	-	-	-	BU286	-	-
5.9L	71	87	-	-	-	-	-	-	BU286	-	-

DIESEL PICKUP

5.9L	01	04	-	-	-	-	-	-	BU653	-	-
5.9L	94	01	-	-	-	-	-	-	BU653	-	-
5.9L	94	01	-	-	-	-	-	-	BU653	-	-

FORD

FLATHEAD APPLICATIONS

221 / 23938	48	-	-	-	-	-	-	-	-	-	-
221 / 23938	48	-	-	-	-	-	-	-	-	-	03-004
239 / 25549	53	-	-	-	-	-	-	-	-	-	-
239 / 25549	53	-	-	-	-	-	-	-	-	-	03-004

FAIRLANE, TORINO, PASSENGER CAR SMALL BLOCK (see big block section for more apps)

ALL	63	74	75-2250	75-2250N	80-2250	80-2250N	90-2250	90-2250N	BU50F	-	03-004
351	68	73	75-2250	75-2250N	80-2250	80-2250N	90-2250	90-2250N	BU50J	-	03-004

MUSTANG 6 CYL.

3.7L	11	12	TBA	TBA	TBA	TBA	TBA	TBA	-	-	-
4.0L	05	10	-	-	-	-	-	-	-	-	03-004
3.8L	94	04	-	-	-	-	-	-	BU50J	-	03-004

MUSTANG 8 CYL.

5.0L	11	12	75-2230	75-2230N	80-2230	80-2230N	90-2230	90-2230N	BA51	78175	-
5.3L	06	10	75-2220**	75-2220N**	80-2220**	80-2220N**	90-2220**	90-2220N**	BA51	78175	-
4.6L	05	10	75-2260*	75-2260N*	80-2260*	80-2260N*	90-2260*	90-2260N*	BA51	78175	03-004
4.6L	05	10	75-2265*	75-2265N*	80-2265*	80-2265N*	90-2265*	90-2265N*	BA51	78175	03-048
4.6L	99	04	75-2200	75-2200N	80-2200	80-2200N	90-2200	90-2200N	BA50M	-	03-004
4.6L	99	04	75-2220	75-2200N	80-2220	80-2220N	90-2220	90-2220N	BA50M	-	03-004
4.6L	96	00	75-2260`	75-2260N	80-2260	80-2260N	90-2260	90-2260N	BA50M	-	03-004
4.6L	96	00	75-2265	75-2265N	80-2265	80-2265N	90-2265	90-2265N	BA50M	-	03-048
5.0L	93	95	75-2240	75-2240N	80-2240	80-2240N	90-2240	90-2240N	BA50M	78130	03-004

ENGINE	YEARS	APPLICATION	OEM SET	HDX SET	POWERGRIP SET	POWERGRIP HD SET	STEEL FW	ALUMINUM FW	SIZE/SPLINE
--------	-------	-------------	---------	---------	---------------	------------------	----------	-------------	-------------

MUSTANG 8 CYL. (CONT)

5.0L	86 95	HI-CLAMP SEVERE DUTY EXC.TKO	88794	88794HD	98794	98794HD	1525	2525	10.5, 1 1/16-10
5.0L	86 95	ALL W/ TREMEC TKO TRANS.	88794T	88794HDT	98794T	98794HDT	1525	2525	10.5, 1 1/8-26
ALL	65 70	289, 302	88502	88502HDX	98502	98502HD	1505	2515	10.5, 1 1/16-10
ALL	69 73	351 W/ 11 " CLUTCH	88769	88769HDX	98769	98769HD	1505	2515	11,1 1/16-10
ALL	69 73	351 W/ 11 " CLUTCH 26 SPLINE	88769T	88769HDT	98769T	98769HDT	1505	2515	11,1 1/8-26
ALL	69 73	351 W/ 11 " CLUTCH DIAPHRAGM REPLACEMENT	88769	88969HDX	98969	98969HD	1505	2515	11,1 1/16-10
ALL	69 73	351 W/ 11 " CLUTCH DIAPHRAGM REPL 26 SPLINE	88769T	88969HDT	98969T	98969HDT	1505	2515	11,1 1/8-26
ALL	66 71	SEE BIG BLOCK LISTING BELOW	*RAM hydraulic bearing 78175 recommended **RAM hydraulic bearing 78175 required 08-up						

BIG BLOCK EQUIPPED CARS/TRUCKS

ALL	65 72	390, 427, 460 12" LEVER TYPE REPLACES 11.5" OEM	-	88775	98775	98775HD	1519	2519	12, 1 1/6-10
ALL	65 72	390, 427, 460 12" LEVER TYPE - REPLACES 11.5" OEM	-	88883	98883	98883HD	1519	2519	12, 1 3/8-10
ALL	65 72	390, 427, 460 12" DIAPHRAGM REPLACES 11.5" OEM	-	88990	98990	98990HD	1519	2519	12, 1 1/6-10
ALL	65 72	390, 427, 460 12" DIAPHRAGM REPL11.5" 26 SPLINE	-	88994	98994	98994HD	1519	2519	12, 1 1/8-26
ALL	65 72	390, 427, 460 11" LEVER CLUTCH	-	88769HDX***	98769***	98769HD***	1519	2519	11,1 1/16-10
ALL	65 72	390, 427, 460 11"DIAPHRAGM REPLACEMENT	-	88969HDX***	98969***	98969HD***	1519	2519	11,1 1/16-10
ALL	65 72	390, 427, 460 11" LEVER CLUTCH	-	88988HDX	98988***	98988HD***	1519	2519	11,1 3/8-10
ALL	66 70	428 12" LEVER TYPE REPLACES 11.5" OEM	-	88775	98775	98775HD	1518	2518	12, 1 1/6-10
ALL	66 70	428 12" LEVER TYPE REPLACES 11.5" OEM	-	88883	98883	98883HD	1518	2518	12, 1 3/8-10
ALL	66 70	428 12" DIAPHRAGM REPLACES 11.5" OEM	-	88990	98990	98990HD	1518	2518	12, 1 1/6-10
ALL	66 70	428 12" DIAPHRAGM REPL 11.5" 26 SPLINE	-	88994	98994	98994HD	1518	2518	12, 1 1/8-26
ALL	65 72	428 11" LEVER CLUTCH	-	88769HDX***	98769***	98769HD***	1518	2518	11,1 1/16-10
ALL	65 72	428 11" DIAPHRAGM REPL	-	88969HDX***	98969***	98969HD***	1518	2518	11,1 1/16-10
ALL	65 72	428 11" LEVER CLUTCH	-	88988HDX	98988***	98988HD***	1518	2518	11,1 3/8-10
ALL	79 98	460 LEVER TYPE REPL 11.5" OEM	-	88775	98775	98775HD	1517**	2517**	12, 1 1/6-10
ALL	79 98	460 LEVER TYPE REPL 11.5" OEM	-	88883	98883	98883HD	1517**	2517**	12, 1 3/8-10
ALL	79 98	460 12" DIA REPL 11.5" OEM	-	88990	98990	98990HD	1517**	2517**	11,1 1/16-10
ALL	79 98	428 12" DIA REPL 11.5" 26 SPLINE	-	88994	98994	98994HD	1517**	2517**	11,1 1/8-26
ALL	65 72	460 11" LEVER CLUTCH	-	88769HDX***	98769***	98769HD***	1517**	2517**	11,1 1/16-10
ALL	65 72	460 11" DIAPHRAGM REPLACEMENT	-	88969HDX***	98969***	98969HD***	1517**	2517**	11,1 1/16-10
ALL	65 72	460 11" LEVER CLUTCH	-	88988HDX	98988***	98988HD***	1517**	2517**	11,1 3/8-10

**Flywheel shown is 184 tooth ring gear, some engines equipped with 176 tooth ring gear use RAM 1517B or 2517B
***RAM flywheel required

FORD TRUCK RANGER

2.9L	88 92		88619	88619	98619	98619HD	-	-	9, 1-23
3.0L	90 92		88619	88619	98619	98619HD	-	-	9, 1-23
3.0L	93 95	TO 10/94	88452	88452	98452	98452HD	-	-	9, 1-23
3.0L	95 00		88453	88453	98453	98453HD	-	-	9 1/4, 1-23
3.0L	01 07		88980	88980	98980	98980HD	-	-	9 1/4, 1-23
4.0L	90 92		88685	88685	98685	98685HD	-	-	10, 1-23
4.0L	93 97		88460	88460	98460	98450HD	-	-	10, 1-23
4.0L	98 00		88913	88913	98913	98913HD	-	-	10 1/4, 1-23
4.0L	01 10		88981	98981	98981	98981HD	-	-	10 1/4, 1-23

BRONCO AND F SERIES PICKUP

5.0L	93 98	302, 5 SP. INTERNAL SLAVE	88463	88463	98463	98463HD	-	-	11, 1 1/16-10
5.0L	88 93	302, 4 SPEED	88801	88801	98801	98801HD	-	-	11, 1 1/16-10
5.0L	88 92	302, 5 SPEED	88620	88620	98620	98620HD	-	-	11, 1 1/16-10
5.0L	62 82	302	88777	88777	98777	98777HD	-	-	11, 1 1/16-10
5.4L	99 10	329	88948	88948	98948HD	98948HD	-	-	12, 1 1/4-10
5.8L	95 98	351, FROM 2-94	88461	88461	*	*	-	-	11.5, 1 1/16-10
5.8L	93 94	351, 5 SPEED	88463	88463	98463	98463HD	-	-	11, 1 1/16-10
5.8L	93 94	351, 4 SPEED	88801	88801	98801	98801HD	-	-	11, 1 1/16-10
5.8L	88 92	351, 5 SPEED	88620	88620	98620	98620HD	-	-	11, 1 1/16-10
5.8L	88 92	351, 4 SPEED	88801	88801	98801	98801HD	-	-	11, 1 1/16-10

MUSTANG 8 CYL. (CONT)

5.0L	86	95	75-2240	75-2240N	80-2240	80-2240N	90-2240	90-2240N	BA50M	78130	03-004
5.0L	86	95	75-2245	75-2245N	80-2245	80-2245N	90-2245	90-2245N	BA50M	78132	03-048
ALL	65	70	75-2250	75-2250N	80-2250	80-2250N	90-2250	90-2250N	BU50J	78130	03-004
ALL	69	73	75-2250	75-2250N	80-2250	80-2250N	90-2250	90-2250N	BU50J	78130	03-004
ALL	69	73	75-2255	75-2255N	80-2255	80-2255N	90-2255	90-2255N	BU50J	78132	03-048
ALL	69	73	75-2250	75-2250N	80-2250	80-2250N	90-2250	90-2250N	BU50J	-	03-004
ALL	69	73	75-2255	75-2255N	80-2255	80-2255N	90-2255	90-2255N	BU50J	78132	03-048

BIG BLOCK EQUIPPED CARS/TRUCKS

ALL	65	72	-	-	80-2285	80-2285N	80-2285	90-2285N	BU50J	78130	03-004
ALL	65	72	-	-	-	-	-	-	BU50J	-	-
ALL	65	72	-	-	80-2285	80-2285N	80-2285	90-2285N	BU50J	78130	03-004
ALL	65	72	-	-	80-2290	80-2290N	90-2290	90-2290N	BU50J	-	03-048
ALL	65	72	-	-	80-2285	80-2285N	80-2285	90-2285N	BU50J	78130	03-004
ALL	65	72	-	-	80-2285	80-2285N	80-2285	90-2285N	BU50J	78130	03-004
ALL	65	72	-	-	-	-	-	-	BU50J	-	-
ALL	66	70	-	-	80-2287	80-2287N	90-2287	90-2287N	BU50J	78130	03-004
ALL	66	70	-	-	-	-	-	-	BU50J	-	-
ALL	66	70	-	-	80-2287	80-2287N	90-2287	90-2287N	BU50J	78130	03-004
ALL	66	70	-	-	80-2291	80-2291N	90-2291	90-2291N	BU50J	-	03-048
ALL	65	72	-	-	80-2287	80-2287N	90-2287	90-2287N	BU50J	78130	03-004
ALL	65	72	-	-	80-2287	80-2287N	90-2287	90-2287N	BU50J	78130	03-004
ALL	65	72	-	-	-	-	-	-	BU50J	-	-
ALL	79	98	-	-	80-2286	80-2286N	90-2286	90-2286N	BU50J	78130	03-004
ALL	79	98	-	-	-	-	-	-	BU50J	-	-
ALL	79	98	-	-	80-2286	80-2286N	90-2286	90-2286N	BU50J	78130	03-004
ALL	79	98	-	-	80-2292	80-2292N	90-2292	90-2292N	BU50J	-	03-048
ALL	65	72	-	-	80-2286	80-2286N	90-2286	90-2286N	BU50J	78130	03-004
ALL	65	72	-	-	80-2286	80-2286N	90-2286	90-2286N	BU50J	78130	03-004
ALL	65	72	-	-	-	-	-	-	BU50J	-	-

FORD TRUCK

RANGER

2.9L	88	92	-	-	-	-	-	-	BA50P	-	-
3.0L	90	92	-	-	-	-	-	-	BA50P	-	-
3.0L	93	95	-	-	-	-	-	-	BA50P	-	-
3.0L	95	00	-	-	-	-	-	-	BA50P	-	-
3.0L	01	07	-	-	-	-	-	-	BA50P	-	-
4.0L	90	92	-	-	-	-	-	-	BA50P	-	-
4.0L	93	97	-	-	-	-	-	-	BA50P	-	-
4.0L	98	00	-	-	-	-	-	-	BA50P	-	-
4.0L	01	10	-	-	-	-	-	-	BA50P	-	-

BRONCO AND F SERIES PICKUP

5.0L	93	98	-	-	-	-	-	-	BA50M	-	03-004
5.0L	88	93	-	-	-	-	-	-	BA50M	-	03-004
5.0L	88	92	-	-	-	-	-	-	BA50M	-	03-004
5.0L	62	82	-	-	-	-	-	-	BA50M	-	03-004
5.4L	99	10	-	-	-	-	-	-	BA50M	-	-
5.8L	95	98	-	-	-	-	-	-	BA50M	-	03-004
5.8L	93	94	-	-	-	-	-	-	BA50M	-	03-004
5.8L	93	94	-	-	-	-	-	-	BA50M	-	03-004
5.8L	88	92	-	-	-	-	-	-	BA50M	-	03-004
5.8L	88	92	-	-	-	-	-	-	BA50M	-	03-004

ENGINE	YEARS	APPLICATION	OEM SET	HDX SET	POWERGRIP SET	POWERGRIP HD SET	STEEL FW	ALUMINUM FW	SIZE/SPLINE
--------	-------	-------------	---------	---------	---------------	------------------	----------	-------------	-------------

BRONCO AND F SERIES PICKUP (CONT)

5.8L	84 87	351, UNDER 8500 GVW	88735	88735	98735	98735HD	-	-	10, 1 1/16-10
7.5L	93 98	460	88892	88892	*	*	-	-	12.25, 1 1/4-10
7.5L	87 82	460	88559	88559	98559*	*	-	-	12, 1 1/4-10
7.5L	83 87	460	88561	88561	98561	98561HD	-	-	11, 1 1/16-10

DIESEL PICKUP

6.0L	04	F250,350 CONVERSION. SOLID FW #1560 REQUIRED	-	88914HDX	-	98914HD	1560	-	13, 1 3/8-10
6.0L	04	F450,550 FOR OEM SOLID FLYWHEEL	88914	88914HDX	-	98914HD	1560	-	13, 1 3/8-10
7.3L	98 03	TURBO, 6 SPEED. FOR OEM SOLID FLYWHEEL	88914	88914HDX	-	98914HD	1560	-	13, 1 3/8-10
7.3L	94 98	F250, 350 TURBO,5 SP. CONVERSION FW #1560 REQ.	-	88622HDX	-	98622HD	1560	-	13, 1 1/4-10

JEEP

CJ, DJ, WRANGLER

3.8L	07 08	6 CYL.	88938	88938HDX	98938	98938HD	-	-	10.5, 1 1/8-10
4.0L	00 06	6 CYL.	88938	88938HDX	98938	98938HD	-	-	10.5, 1 1/8-10
4.0L	94 99	6 CYL.	88548	88548HDX	98548	98548HD	-	-	10.5, 1 1/8-10
4.0L	93	6 CYL.	88436	88436HDX	98436	98436HD	-	-	10.5, 1 1/8-10
4.0L	90 92	6 CYL.	88435	88435HDX	98435	98435HD	-	-	10.5, 1 1/8-10
4.0L	89	6 CYL., AISIN TRANS.	88434	88434HDX	98434	98434HD	-	-	10.5, 1 1/8-10
4.2L	90	6 CYL.	88435	88435HDX	98435	98435HD	-	-	10.5, 1 1/8-10
4.2L	89	6 CYL., AISIN TRANS.	88434	88434HDX	98434	98434HD	-	-	10.5, 1 1/8-10
4.2L	89	6 CYL., PEUGOT TRANS.	88674	88674HDX	98674	98674HD	-	-	10.5, 1 1/8-10
4.2L	87 88	6 CYL.	88674	88674HDX	98674	98674HD	-	-	10.5, 1 1/8-10
4.2L	82 86	6 CYL.	88432	88432HDX	98432	98432HD	-	-	10.5, 1 1/8-10
4.2L	80 81	6 CYL.	88765	88765HDX	98765	98765HD	-	-	10.5, 1 1/8-10
225	76 79	6 CYL.	88767	88767HDX	98767	98767HD	-	-	10.5, 1 1/16-10
225	66 71	6 CYL.	88760	88760HDX	98760	98760HD	-	-	10.5, 1 1/8-10
232	76 79	6 CYL.	88767	88767HDX	98767	98767HD	-	-	10.5, 1 1/16-10
232	65 75	6 CYL.	88499	88499HDX	98499	98499HD	-	-	10.5, 1 1/8-10
258	76 79	6 CYL., 10.5" CLUTCH	88765	88765HDX	98765	98765HD	-	-	10.5, 1 1/8-10
258	76 79	6 CYL., 11" CLUTCH	88772	88772HDX	98772	98772HD	-	-	10.5, 1 1/8-10
258	72 75	6 CYL., 10.5" CLUTCH	88499	88499HDX	98499	98499HD	-	-	10.5, 1 1/8-10
304	80 81	8 CYL.	88767	88767HDX	98767	98767HD	-	-	10.5, 1 1/16-10
304	72 75	8 CYL.	88499	88499HDX	98499	98499HD	-	-	10.5, 1 1/8-10

OLDSMOBILE

PASSENGER CAR

ALL	55 85		88760	88760HDX	98760	98760HD	-	-	10.5, 1 1/8-10
ALL	55 85		88762	88762HDX	98762	98762HD	-	-	11, 1 1/8-10

PLYMOUTH

BARRACUDA

ALL	65 75	273, 318, 340, 6 BOLT CRANK	88766	88766HDX	98766	98766HD	1503	2503	10.5, 1-23
ALL	74 75	383, 400, 6 BOLT CRANK EXC. 360 W/EXT. BAL.	88773	88773HDX	98773	98773HD	1503	2503	10.95, 1-23
360	74 75	6 BOLT CRANK W/EXT. BALANCE	88773	88773HDX	98773	98773HD	-	-	10.95, 1-23
426	70 71	8 BOLT CRANK	88503	88503HDX	98503	98503HD	1583	2583	10.95, 1 3/16-18
440	70 72	6 BOLT CRANK	88503	88503HDX	98503	98503HD	1503	2503	10.95, 1 3/16-18

DUSTER

ALL	65 73	273, 318, 340, 6 BOLT CRANK, 130T	88766	88766HDX	98766	98766HD	1503	2503	10.5, 1-23
360	74	6 BOLT CRANK W/EXT. BALANCE	88773	88773HDX	98773	98773HD	-	-	10.95, 1-23
360	71	6 BOLT CRANK W/EXT. BALANCE	88766	88766HDX	98766	98766HD	-	-	10.5, 1-23
383	70 71	6 BOLT CRANK,130T RING GEAR	88773	88773HDX	98773	98773HD	1503	2503	10.95, 1-23
400	72 74	6 BOLT CRANK,130T RING GEAR	88773	88773HDX	98773	98773HD	1503	2503	10.95, 1-23
426	70 71	8 BOLT CRANK,130T RING GEAR	88503	88503HDX	98503	98503HD	1583	2583	10.95, 1 3/16-18
426	63 69	8 BOLT CRANK, 143T RING GEAR	88504	88504HDX	98504	98504HD	1593	2593	11, 1 3/16-18
440	70 72	6 BOLT CRANK, 130T RING GEAR	88503	88503HDX	98503	98503HD	1503	2503	10.95, 1 3/16-18

PASSENGER CAR

ALL	61 71	318,361, 6 BOLT CRANK	88766	88766HDX	98766	98766HD	1503	2503	10.5, 1-23
383	69 70	6 BOLT CRANK, 10.5" CLUTCH	88766	88766HDX	98766	98766HD	1503	2503	10.5, 1-23
383	69 70	6 BOLT CRANK, 10.95" CLUTCH	88773	88773HDX	98773	98773HD	1503	2503	10.95, 1-23
426	70 71	8 BOLT CRANK	88503	88503HDX	98503	98503HD	1583	2583	10.95, 1 3/16-18
440	69 71	6 BOLT CRANK	88503	88503HDX	98503	98503HD	1503	2503	10.95, 1 3/16-18



BRONCO AND F SERIES PICKUP (CONT)

5.8L	84	87	-	-	-	-	-	BA50M	-	03-004
7.5L	93	98	-	-	-	-	-	BA94	-	-
7.5L	87	82	-	-	-	-	-	BA94	-	-
7.5L	83	87	-	-	-	-	-	BA94	-	03-004

DIESEL PICKUP

6.0L		04	-	-	-	-	-	BA50M	-	-
6.0L		04	-	-	-	-	-	BA50M	-	-
7.3L	98	03	-	-	-	-	-	BA50M	-	-
7.3L	94	98	-	-	-	-	-	BA50M	-	-

JEEP

CJ, DJ, WRANGLER

3.8L	07	08	-	-	-	-	-	BA207	-	-
4.0L	00	06	-	-	-	-	-	-	-	-
4.0L	94	99	-	-	-	-	-	BA207	-	03-001
4.0L		93	-	-	-	-	-	BA207	-	03-001
4.0L	90	92	-	-	-	-	-	BA206	-	03-001
4.0L		89	-	-	-	-	-	BA206	-	03-001
4.2L		90	-	-	-	-	-	BA206	-	03-001
4.2L		89	-	-	-	-	-	BA206	-	03-001
4.2L		89	-	-	-	-	-	BA206	-	03-001
4.2L	87	88	-	-	-	-	-	BA206	-	03-001
4.2L	82	86	-	-	-	-	-	BU79	-	03-001
4.2L	80	81	-	-	-	-	-	BU79	-	03-001
225	76	79	-	-	-	-	-	BU76	-	03-004
225	66	71	-	-	-	-	-	BU75	-	03-001
232	76	79	-	-	-	-	-	BU76	-	03-004
232	65	75	-	-	-	-	-	BU77	-	03-001
258	76	79	-	-	-	-	-	-	-	03-001
258	76	79	-	-	-	-	-	-	-	-
258	72	75	-	-	-	-	-	BU77	-	03-001
304	80	81	-	-	-	-	-	BU76	-	03-004
304	72	75	-	-	-	-	-	BU76	-	03-001

OLDSMOBILE

PASSENGER CAR

ALL	55	85	-	-	-	-	-	-	78125HD	03-001
ALL	55	85	-	-	-	-	-	-	78125HD	03-001

PLYMOUTH

BARRACUDA

ALL	65	75	75-2300	75-2300N	80-2300	80-2300N	90-2300	90-2300N	BU286	-	-
ALL	74	75	75-2300	75-2300N	80-2300	80-2300N	90-2300	90-2300N	BU286	-	-
360	74	75	75-2300	75-2300N	80-2300	80-2300N	90-2300	90-2300N	BU286	-	-
426	70	71	75-2340	75-2340N	80-2340	80-2340N	90-2340	90-2340N	BU286	-	-
440	70	72	75-2310	75-2310N	80-2310	80-2310N	90-2310	90-2310N	BU286	-	-

DUSTER

ALL	65	73	75-2300	75-2300N	80-2300	80-2300N	90-2300	90-2300N	BU286	-	-
360		74	-	-	-	-	-	-	BU286	-	-
360		71	-	-	-	-	-	-	BU286	-	-
383	70	71	75-2300	75-2300N	80-2300	80-2300N	90-2300	90-2300N	BU286	-	-
400	72	74	75-2300	75-2300N	80-2300	80-2300N	90-2300	90-2300N	BU286	-	-
426	70	71	75-2340	75-2340N	80-2340	80-2340N	90-2340	90-2340N	BU286	-	-
426	63	69	75-2360	75-2360N	80-2360	80-2360N	90-2360	90-2360N	BU286	-	-
440	70	72	75-2310	75-2310N	80-2310	80-2310N	90-2310	90-2310N	BU286	-	-

PASSENGER CAR

ALL	61	71	75-2300	75-2300N	80-2300	80-2300N	90-2300	90-2300N	BU286	-	-
383	69	70	75-2300	75-2300N	80-2300	80-2300N	90-2300	90-2300N	BU286	-	-
383	69	70	75-2300	75-2300N	80-2300	80-2300N	90-2300	90-2300N	BU286	-	-
426	70	71	75-2340	75-2340N	80-2340	80-2340N	90-2340	90-2340N	BU286	-	-
440	69	71	75-2310	75-2310N	80-2310	80-2310N	90-2310	90-2310N	BU286	-	-

ENGINE	YEARS	APPLICATION	OEM SET	HDX SET	POWERGRIP SET	POWERGRIP HD SET	STEEL FW	ALUMINUM FW	SIZE/SPLINE
--------	-------	-------------	---------	---------	---------------	------------------	----------	-------------	-------------

PONTIAC

FIREBIRD, TRANS AM

5.7L	98 02	ALL	88931	88931HDX	98931	98931HD**	1550	2550	11, 1 1/8-26
5.7L	98 02	12" OPTION	-	88935	98935	98935HD	1550	2550	11, 1 1/8-26
5.7L	93 97	ALL	88516	88516HDX	98516	98516HD	-	2554	11, 1 1/8-26
5.0L	82 92	ALL	88730	88730HDX	98730	98730HD	-	-	10.5, 1 1/8-26
5.0L	79 81	305 C.I. 4 SPEED	88760	88760HDX	98760	98760HD	-	-	10.5, 1 1/8-10
5.0L	81	305 C.I. CALIF. ONLY	88761	88761HDX	98761	98761HD	-	-	10.5, 1 1/8-26
5.0L	81	305 C.I. EXC. CALIFORNIA	88764	88764HDX	98764	98764HD	-	-	11, 1 1/8-26
301	80	ALL	88760	88760HDX	98760	98760HD	-	-	10.5, 1 1/8-10
301	77	ALL	88760	88760HDX	98760	98760HD	-	-	10.5, 1 1/8-10
301	79	ALL	88761	88761HDX	98761	98761HD	-	-	10.5, 1 1/8-26
326	67	ALL, 2.750" CRANK PILOT DIAMETER	88760	88760HDX	98760	98760HD	1557	2557	10.5, 1 1/8-10
350	69 71	H.O., 2.750" CRANK PILOT DIAMETER	88760	88760HDX	98760	98760HD	1557	2557	10.5, 1 1/8-10
350	75 77	2 & 4 BBL 4 SPEED	88761	88761HDX	98761	98761HD	-	-	10.5, 1 1/8-26
350	78	ALL	88760	88760HDX	98760	98760HD	-	-	10.5, 1 1/8-10
400	67 72	3 & 4 SPEED RAM AIR, 2.750" PILOT	88760	88760HDX	98760	98760HD	1557	2557	10.5, 1 1/8-10
400	71 77	4 SPEED 4 BBL, 2.750" PILOT	88761	88761HDX	98761	98761HD	1557	2557	10.5, 1 1/8-26
400	77 79	3 & 4 SPEED	88764	88764HDX	98764	98764HD	-	-	11, 1 1/8-26
455	73 76	4 SPEED 4 BBL, 2.750" CRANK PILOT	88764	88764HDX	98764	98764HD	1557	2557	11, 1 1/8-26

NOTE: 2.750" crank pilot refers to flywheel center hole opening

**RAM hydraulic bearing 78165 and/or adjustable master cylinder 510 recommended

GTO

ALL	04 07	LS1, LS2	-	88931HDX	98931	98931HD**	1550	2550	11, 1 1/8-26
ALL	04 07	12" OPTION REQ. RAM FLYWHEEL	-	88935	98935	98935HD	1550	2550	11, 1 1/8-26
350	70 71	4 BBL., 2.750" PILOT DIAMETER	88760	88760HDX	98760	98760HD	1557	2557	10.5, 1 1/8-10
389	64 66	ALL, 2.750" CRANK PILOT DIAMETER	88760	88760HDX	98760	98760HD	1557	2557	10.5, 1 1/8-10
400	67 70	3 & 4 SPEED, 2.750" CRANK PILOT	88760	88760HDX	98760	98760HD	1557	2557	10.5, 1 1/8-10
400	71 72	4 BBL W/ 10 SPLINE INPUT, 2.750"	88760	88760HDX	98760	98760HD	1557	2557	10.5, 1 1/8-10
400	71 74	4 BBL W/26 SPLINE INPUT, 2.750"	88761	88761HDX	98761	98761HD	1557	2557	10.5, 1 1/8-26
455	70	4 BBL 3 SPEED, 2.750" CRANK PILOT	88762	88762HDX	98762	98762HD	1557	2557	11.0, 1 1/8-10
455	71 73	4 SPEED, 2.750" CRANK PILOT DIA	88764	88764HDX	98764	98764HD	1557	2557	11, 1 1/8-26

NOTE: 2.750" crank pilot refers to flywheel center hole opening

**RAM hydraulic bearing 78173 recommended

SOLSTICE

2.4L	06 07		-	90-1500*	-	90-1500C*	-	-	8 7/8, 1 1/8-26
------	-------	--	---	----------	---	-----------	---	---	-----------------

*Complete set including aluminum flywheel

PASSENGER CAR

ALL	55 85	W/10.5", 2.750" CRANK PILOT	88760	88760HDX	98760	98760HD	1557	2557	10.5, 1 1/8-10
ALL	55 85	W/11", 2.750" CRANK PILOT	88762	88762HDX	98762	98762HD	1557	2557	11, 1 1/8-10

NOTE: 2.750" crank pilot refers to flywheel center hole opening

SATURN

SKY

2.4L	07 08	NON TURBO	-	90-1500*	-	90-1500C*	-	-	8 7/8, 1 1/8-26
------	-------	-----------	---	----------	---	-----------	---	---	-----------------

*Complete set including aluminum flywheel

TOYOTA

CAMRY

2.2L	92 01	ALL	88410	88410HDX	98410	98410HD	-	-	9, 1-20
2.4L	02 06	ALL	88924	88924HDX	98924	98924HDX	-	-	9 3/8, 1 1/8-21
3.0L	92 01	ALL	88924	88924HDX	98924	98924HDX	-	-	9 3/8, 1 1/8-21

CELICA

1.6L	91 93	FROM 6/91	88408	88408HDX	98408	98408HD	-	-	8 3/8, 15/16-21
1.6L	90 91	TO 5/91	88691	88691HDX	98691	98691HDX	-	-	8 3/8, 15/16-21
1.8L	02 03	5 SPEED EXC GT-S	88988	-	-	-	-	-	8 7/8, 1-20
1.8L	00 05	GT-S 5,6 SPEED	88987	88987HDX	98987	98987HD	-	-	8 3/8, 15/16-21
1.8L	94 01	ALL EXC. GT-S	88925	88925HDX	98925	98925HD	-	-	8 3/8, 15/16-21
2.0L	90 94	TURBO	88407	88407HDX	98407	98407HD	-	-	8 7/8, 1 1/8-21
2.0L	88 89	TURBO, 4WD	88409	88409HDX	98409	98409HD	-	-	9 3/8, 1 1/8-21

TOYOTA TRUCK

TACOMA, TUNDRA

3.4L	95 04	ALL	88894	88894HDX	98894	98894HD	-	-	9 7/8, 1 1/8-21
4.0L	05 11	ALL	88898	TBA	TBA	TBA	-	-	TBA

T-100

3.0L	93 94	2 WD	88514	88514HDX	98514	98514HD	-	-	9 3/8, 1/18-21
3.4L	95 04	ALL	88894	88894HDX	98894	98894HD	-	-	9 7/8, 1 1/8-21

PONTIAC

FIREBIRD, TRANS AM

5.7L	98	02	75-2100**	75-2100N**	80-2100**	80-2100N**	90-2100**	90-2100N**	BA381	78165	03-013
5.7L	98	02	75-2100**	75-2100N**	80-2100**	80-2100N**	90-2100**	90-2100N**	BA222	78165	03-013
5.7L	93	97	-	-	-	-	-	-	BA381	-	03-013
5.0L	82	92	75-2155	75-2155N	80-2155	80-2155N	90-2155	90-2155N	BA381	78125HD	03-013
5.0L	79	81	-	-	-	-	-	-	BU656	78125HD	03-001
5.0L		81	-	-	-	-	-	-	BU656	78125HD	03-013
5.0L		81	-	-	-	-	-	-	BU656	78125HD	03-013
301		80	-	-	-	-	-	-	BU656	78125HD	03-001
301		77	-	-	-	-	-	-	BU656	78125HD	03-001
301		79	-	-	-	-	-	-	BU656	78125HD	03-013
326		67	75-2400	75-2400N	80-2400	80-2400N	90-2400	90-2400N	BU75	78125HD	03-001
350	69	71	75-2400	75-2400N	80-2400	80-2400N	90-2400	90-2400N	BU75	78125HD	03-001
350	75	77	-	-	-	-	-	-	BU75	78125HD	03-013
350		78	-	-	-	-	-	-	BU75	78125HD	03-001
400	67	72	75-2400	75-2400N	80-2400	80-2400N	90-2400	90-2400N	BU75	78125HD	03-001
400		71	75-2410	75-2410N	80-2410	80-2410N	90-2410	90-2410N	BU75	78125HD	03-013
400		77	79	-	-	-	-	-	BU75	78125HD	03-013
455	73	76	75-2410	75-2410N	80-2410	80-2410N	90-2410	90-2410N	BU75	78125HD	03-013

GTO

ALL	04	07	75-2100**	75-2100N**	80-2100**	80-2100N**	90-2100**	90-2100N**	BA381	78173	03-013
ALL	04	07	75-2100**	75-2100N**	80-2100**	80-2100N**	90-2100**	90-2100N**	BA381	78173	03-013
350	70	71	75-2400	75-2400N	80-2400	80-2400N	90-2400	90-2400N	BU75	78125HD	03-001
389	64	66	75-2400	75-2400N	80-2400	80-2400N	90-2400	90-2400N	-	78125HD	03-001
400	67	70	75-2400	75-2400N	80-2400	80-2400N	90-2400	90-2400N	BU75	78125HD	03-001
400	71	72	75-2400	75-2400N	80-2400	80-2400N	90-2400	90-2400N	BU75	78125HD	03-001
400	71	74	75-2410	75-2410N	80-2410	80-2410N	90-2410	90-2410N	BU75	78125HD	03-013
455		70	75-2400	75-2400N	80-2400	80-2400N	90-2400	90-2400N	BU75	78125HD	03-001
455	71	73	75-2410	75-2410N	80-2410	80-2410N	90-2410	90-2410N	BU75	78125HD	03-013

SOLSTICE

2.4L	06	07	-	-	-	-	-	-	-	-	03-013
------	----	----	---	---	---	---	---	---	---	---	--------

PASSENGER CAR

ALL	55	85	-	-	-	-	-	-	BU75	78125HD	03-001
ALL	55	85	-	-	-	-	-	-	BU75	78125HD	03-001

SATURN

SKY

2.4L	07	08	-	-	-	-	-	-	-	-	-
------	----	----	---	---	---	---	---	---	---	---	---

TOYOTA

CAMRY

2.2L	92	01	-	-	-	-	-	-	#	-	-
2.4L	02	06	-	-	-	-	-	-	BA6201	-	-
3.0L	92	01	-	-	-	-	-	-	BA6201	-	-

CELICA

1.6L	91	93	-	-	-	-	-	-	BA6201	-	-
1.6L	90	91	-	-	-	-	-	-	#	-	-
1.8L	02	03	-	-	-	-	-	-	-	-	-
1.8L	00	05	-	-	-	-	-	-	-	-	-
1.8L	94	01	-	-	-	-	-	-	BA6201	-	-
2.0L	90	94	-	-	-	-	-	-	BA6201	-	-
2.0L	88	89	-	-	-	-	-	-	#	-	-

TOYOTA TRUCK

TACOMA, TUNDRA

3.4L	95	04	-	-	-	-	-	-	BA6201	-	-
4.0L	05	11	-	-	-	-	-	-	TBA	-	-

T-100

3.0L	93	94	-	-	-	-	-	-	BA6201	-	-
3.4L	95	04	-	-	-	-	-	-	BA6201	-	-

RAM Clutches Online

The RAM Clutches website is a wealth of knowledge in troubleshooting clutch problems, locating additional information on RAM products, viewing additional RAM catalogs, instruction sheets, or just learning about clutches in general. Features like 'Clutch University' and 'The Critical Difference' will teach you about clutches in general, and why we do things the way we do in constructing your performance clutch system.

NOTES:

Warranty Information

Performance Sets and Components

Due to the intended use of these products, warranty is limited to 30 days for correct fit to the specified vehicle, provided there are NO modifications or changes to driveline, tire & wheel diameter, or release mechanisms from factory original components, except as specified as necessary by RAM, and parts are installed as specified by RAM, and any recommended accessory items have been installed. Since this product is a consumable item, no warranty is offered or made for durability or specific performance. This product is intended for installation by qualified installers and hobbyists. RAM will not be liable for installation labor or vehicle downtime if it becomes necessary to return alleged warranty items to the factory for evaluation.

Street Dual Disc units

Street dual disc clutches are STRICTLY FACTORY WARRANTY ONLY. Customer must return the unit to RAM for evaluation and inspection.

Flywheels

RAM flywheels are STRICTLY FACTORY WARRANTY ONLY. Customer must return the unit to RAM for evaluation and inspection.

Hydraulic release bearings

Hydraulic release bearings are STRICTLY FACTORY WARRANTY ONLY. Customer must return the unit to RAM for evaluation and inspection.

Frequently, clutch problems are related to adjustment and/or release system malfunction.

Before removing the suspected warranty clutch from the vehicle, refer to the vehicle service manual for specific information on operation and adjustment of the release system to correctly test and adjust for proper release. If you cannot resolve the problem and must remove the clutch from the vehicle, use the following guidelines to determine if your clutch qualifies for warranty status.

Warranty Status Inspection and Evaluation Checklist

Pressure Plate

Are lever tips worn or grooved?

Are there burn or heat spots on the friction surface?

Is there lubricant or coolant on the pressure plate?

Disc

Is the friction material burned, broken, or excessively worn?

Is the disc carrier or drive hub broken?

Have any of the damper springs been forced or broken from the disc?

Is there lubricant or coolant on the disc?

Release Bearing

Is the bearing face worn or scored?

Has the lubricant been thrown out of the bearing?

Has the bearing turned blue?

The above listed items are what we look for in evaluating a warranty product. If you answered yes to any of the above questions, this product will not qualify for warranty and should not be returned.

If your clutch components do not show any of the above problems the clutch is probably serviceable and there are other release system or flywheel thickness problems that need correction. (Removing more than 0.025" when resurfacing the flywheel will require installation of a flywheel shim to bring the friction surface back to its original position in relation to the release bearing.)

If after checking and repairing/replacing the clutch release components and/or flywheel, you are unable to obtain proper clutch operation, the complete set including the release bearing should be sent to RAM freight prepaid for factory inspection. You must include the original sales receipt and a receipt for resurfacing your flywheel. If the clutch set is found to be defective RAM will repair or replace the defective component(s) at no charge. If the unit is found to be not defective, you will be advised the cost of repair or replacement. All freight charges are the responsibility of the customer.



ramclutches.com

RAM Clutches
201 Business Park Blvd.
Columbia, SC 29203
803.788.6034

RAM *Clutches*

Dual Discs | Clutch Sets | Components | Hydraulics



Forty years of innovation and excellence