



BilletSpecialties

Drag Wheel Style Guide



STIFF FLEETS
CHASSIS & SUSPENSION
Billet Specialties



1-800-
DYNOLINE
DRIVESHAFTS

10

Red rectangular marker

HUNTER STREET

Billet Specialties

MADE IN USA

Specialties



Made in the USA Forged Performance

The Billet Specialties, Inc. Drag Wheel line is backed by 35 years of custom manufacturing experience. Our drag wheels are manufactured, assembled, and finished in our 100,000 square foot facility located in La Grange, IL. We provide you with incomparable quality, service, and innovation while crafting the perfect blend of performance and style into each and every wheel.



STREET LITE





Nova

STREET LITE 15



Standard



Double Beadlock

Single Beadlock

STREET LITE 15



Certification:	SFI 15.1 - Drag Race Rear Wheel				
Double Beadlock Available:	Yes 15x10 & Up				
Single Beadlock Available:	Yes 15x8 & Up				
Lug Nut Type:	Mag Shank - 5/8" Stud				
Caliper Clearance:	5/8" & 1/4"*				
Bolt Pattern:	5x4.50, 5x4.75 5x5.00 - 15x12, 15x14, 15x15 Only				
Finish:	Polished or Black Anodized				
Construction:	Standard, Single, or Double Beadlock				
Size	Backspace (in.)	Weight (lb)	Size	Backspace (in.)	Weight (lb)
15x3.5 *	1.75	9.0	15x10	3.50 - 7.50 **	16.2
15x4 *	1.625 & 2.25	10.5	15x12	3.50 - 7.50 **	18.2
15x6	3.50	12.8	15x14	3.50 - 7.50 **	20.2
15x7	4.50	13.2	15x15	3.50 - 7.50 **	22.2
15x8	3.5 - 5.5 **	14.2			

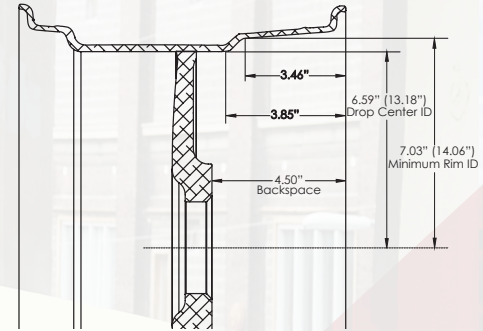
* 15x3.5 & 15x4 with 2.25" Back Space require the use of 1/2" long Mag Shank Lug Nuts and have 1/4" Caliper Clearance.

** Backspace in 1 inch increments only.

Important: Wheels with a backspace of 4.50" or more check for brake clearance by measuring from the center of the axle to the top of the caliper. This measurement cannot exceed 6.51" or the caliper will come in contact with the drop center of the wheel.

BRAKE CLEARANCE

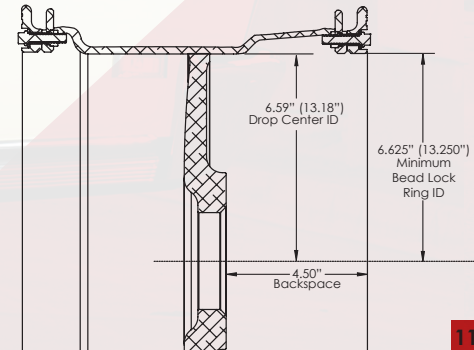
Standard / Single Street Lite



The highest point of the brake caliper cannot exceed 6.51". This is measured from the center of your hub/axle to the highest point on the caliper. Recommended clearance between the wheel & caliper is .080 per Wilwood Disc Brakes.

Double Beadlock

The inside diameter of the 15" beadlock is 13.18".





HERE, YOU ARE.

Governors State UNIVERSITY

HEMI

Loft
Auto Spec



Hoosier





FSS/DI
FSS/H

NMC's
NATIONAL
MOTOR
CROSS



gren
Specialties

AEROSPACE
COMPONENTS
WINNERS CIRCLE



CURTIS

MANLEY
CONNECTING RODS

MOROSO



Holley
EFI

MOSEK
ENGINEERING

ATI
SUPER
DAMPER

Gizmos

JE
PISTONS

JEGS

WIX
LUCAS OIL



Hoosier
Hoosier

WEC

STREET LITE 15 x 10



Standard

Single Beadlock

Extra Clearance



STREET LITE 15 x 10

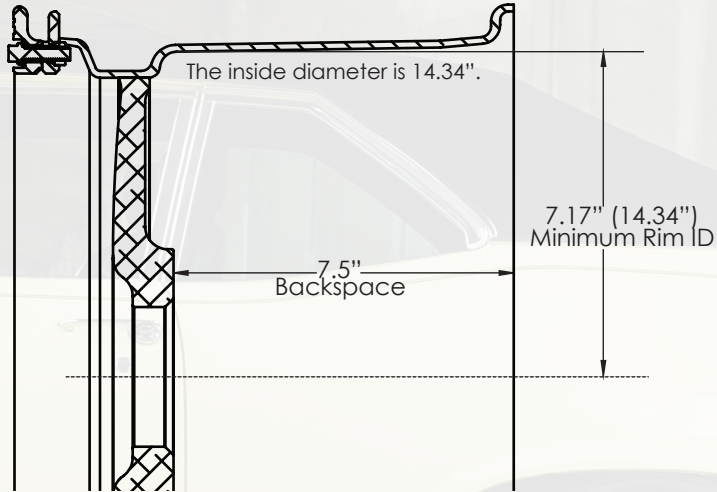
Certification:	SFI 15.1 - Drag Race Rear Wheel				
Double Beadlock Available:	No				
Single Beadlock Available:	Yes				
Lug Nut Type:	Mag Shank - 5/8" Stud Mag Shank SST - 5/8" Stud - SN95 Mustang				
Finish:	Polished Black Anodized				
Construction:	Standard or Single Beadlock				
Application	Caliper Clearance (in.)	Bolt Pattern	Size	Backspace (in.)	Weight (lb)
1993 - 2003 Camaro/Firebird - Fbody	5/8"	5x4.5	15x10	7.50"	14.6 - Standard 17.6 - SBL
S197 Mustang		5x4.75			
2005 - 2014 Mustang GT (NON-BREMBO)		5x120mm*			
1994 - 2004 Fox Body Mustang - SN95	1-5/8"	5x4.5	15x10	6.50"	15 - Standard 18 - SBL

* 5x120mm bolt pattern requires the use of 14mm lugs.

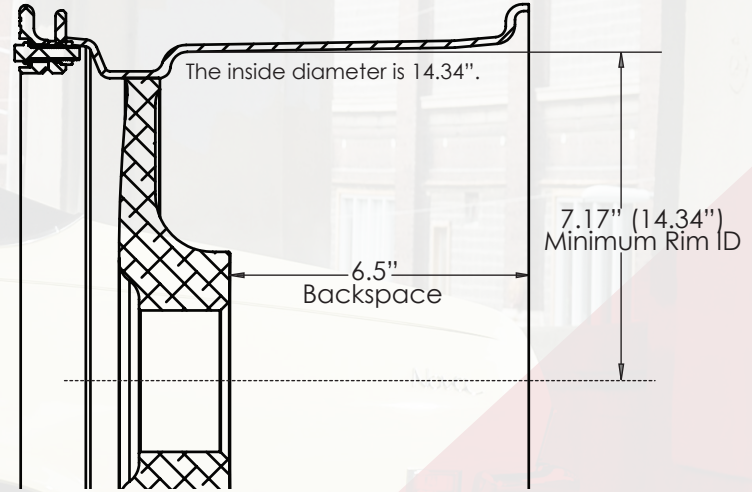
Extra Clearance

BRAKE CLEARANCE

15 X 10 STREET LITE F BODY STANDARD AND SINGLE BEADLOCK



15 X 10 STREET LITE SN95 MUSTANG STANDARD AND SINGLE BEADLOCK



Important:

Caliper measurement cannot exceed 7.09".

This is measured from the center of your Hub/Axel to the highest point of the caliper.

Recommended clearance between the wheel & the caliper is .080 per Wilwood Disc Brakes.





STREET LITE 17



Standard

Single Beadlock

Certification:	SFI 15.1 - Drag Race Rear Wheel			
Double Beadlock Available:	No			
Single Beadlock Available:	Yes			
Lug Nut Type:	Mag Shank - 5/8" Stud			
Caliper Clearance:	5/8"			
Bolt Pattern:	5x4.5, 5x4.75, 5x5.00, 5x115mm*, 5x120mm*			
Finish:	Polished or Black Anodized			
Construction:	Standard, Single, or Double Beadlock			
Size	Backspace (in.)	Size	Backspace (in.)	
17x7	3.50 - 4.50	17x9.5	3.50 - 7.25	
17x8	3.50 - 5.50	17x11	3.50 - 8.50	

* 5x115mm and 5x120mm will be drilled for 14mm lugs and use 14mm lugs only.
Backspace built to your specifications. (1/8" increments)



Wagner & Brake Shop
Auto Parts
Lawn Parts
Tony's Garage
815.726.1696

A.J.R. TOWING & RECOVERY
AR
815.726.1696

Champion
11



NIMRA Keystone Drag Races
NO ASS TR 630T

Detroit Lock

SPEEDWAY
— MOTORS —
815-409-7780

Hoosier

STREET LITE 17 x 4.5



Certification:	SFI 15.2 - Drag Race Front Wheel		
Lug Nut Type:	Mag Shank		
Caliper Clearance:	1.25" at 2.75" Backspace 2" at 2" Backspace		
Bolt Pattern:	5x4.5, 5x4.75, 5x4.5 with 14mm* Lugs, 5x115mm*, or 5x120mm*		
Finish:	Polished Black Powder Coat		
Construction:	One Piece Forged		
Size	Backspace (in.)	Weight (lb)	Caliper Clearance (in.)
17x4.5	2.00	12.6	2
17x4.5	2.75	12.1	1.25

* Requires the use of 14mm Lugs



GRU
3

GRU
3

CORBEAU

50



PHOTO COURTESY OF FRONT STREET MEDIA

STREET LITE 17 x 10



Standard

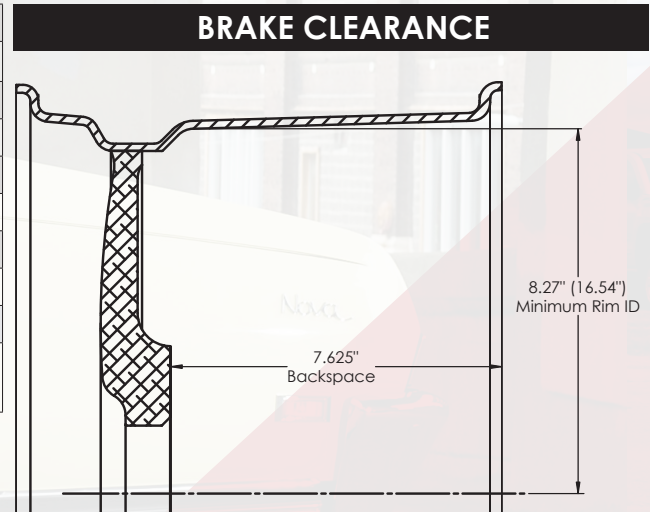


Single Beadlock

S550 Mustang

Certification:	SFI 15.1 - Drag Race Rear Wheel		
Double Beadlock Available:	No		
Single Beadlock Available:	Yes		
Lug Nut Type:	Mag Shank - 5/8" Stud		
Caliper Clearance:	3/4"		
Bolt Pattern:	5x4.5		
Finish:	Polished or Black Anodized		
Construction:	Standard or Single Beadlock		
Size	Backspace (in.)	Weight (lb)	
17x10	7.625	16.7 - Standard 20.3 - SBL	

S550 Wheels Require the use of 14mm Lugs



The highest point of the brake caliper cannot exceed 8.19". This is measured from the center of your hub/axle to the highest point on the caliper. Recommended clearance between the wheel & caliper is .080 per Wilwood Disc Brakes.



GOODYEAR
EAGLE
GT
172 2123/102

Champion



STREET LITE - TRUCK



5 & 6 LUG

Certification:	J2530		
Double Beadlock Available:	No		
Single Beadlock Available:	Yes - Rear Wheel Only		
Lug Nut Type:	Conical Seat - 15" & 17" Wheels		
Finish:	Full Polished or Black Powder Coat		
Construction:	Two Piece Welded 17x4.5 - One Piece Forged		
Application	Size	Bolt Pattern	Backspace (in.)
2006 - 2009 Chevy Trail Blazer SS * Fits: Rear 2WD & AWD Front AWD & AWD	17x4.5	6x5	2.75
	17x7	6x5	4.50
	17x10*	6x5	6.875
1971 - 1998 Chevy C-10 / C-1500	17x4.5	5x5	2.00
	15x10	5x5	5.50
1999 - 2017 Chevy C-1500	17x4.5	6x5.5	2.00
	17x7	6x5.5	4.00
	17x9.5	6x5.5	6.50

WINLITE





WIN LITE 15



Standard



Double Beadlock

Single Beadlock

WIN LITE 15

Certification:		SFI 15.1 - Drag Race Rear Wheel			
Double Beadlock Available:		Yes 15x10 & Up			
Single Beadlock Available:		Yes 15x8 & Up			
Lug Nut Type:		Mag Shank - 5/8" Stud			
Caliper Clearance:		5/8", 1/4"*			
Bolt Pattern:		5x4.50, 5x4.75 5x5.00 - 15x12, 15x14, 15x15 Only			
Finish:		Black Anodized			
Construction:		Standard, Single, or Double Beadlock			
Size	Backspace (in.)	Weight (lb)	Size	Backspace (in.)	Weight (lb)
15x3.5 *	1.75	8.4	15x10	3.50 - 7.50 **	15.6
15x4 *	1.625 & 2.25	9.9	15x12	3.50 - 7.50 **	17.6
15x6	3.50	12.2	15x14	3.50 - 7.50 **	19.6
15x7	4.50	12.6	15x15	3.50 - 7.50 **	21.6
15x8	3.50 - 5.50 **	14.6			

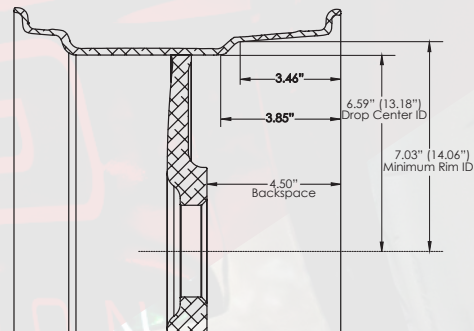
* 15x3.5 & 15x4 with 2.25" Back Space require the use of 1/2" long Mag Shank Lug Nuts and have 1/4" Caliper Clearance.

** Backspace in 1 inch increments only.

Important: Wheels with a backspace of 4.50" or more check for brake clearance by measuring from the center of the axle to the top of the caliper. This measurement cannot exceed 6.51" or the caliper will come in contact with the drop center of the wheel.

BRAKE CLEARANCE

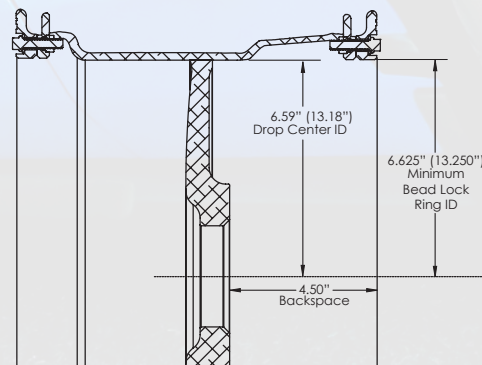
Standard/Single Beadlock



The highest point of the brake caliper cannot exceed 6.51". This is measured from the center of your hub/axle to the highest point on the caliper. Recommended clearance between the wheel & caliper is .080 per Wilwood Disc Brakes.

Double Beadlock

The inside diameter of the 15" beadlock is 13.18".



WIN LITE 15 x 10



Standard

Extra Clearance



Single Beadlock

WIN LITE 15 x 10



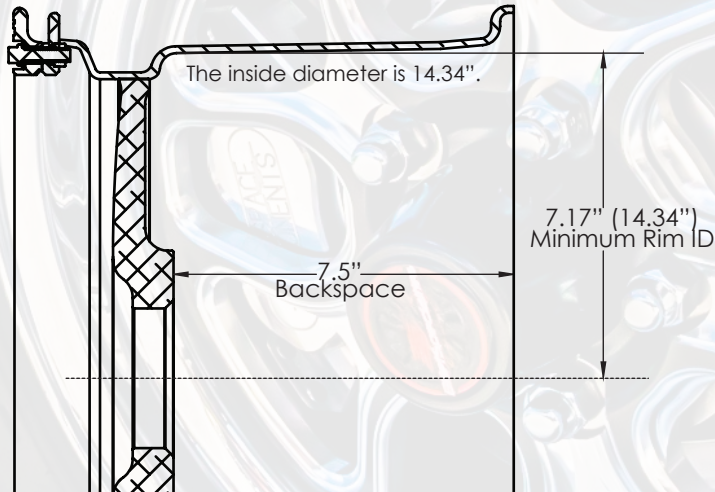
Certification:	SFI 15.1 - Drag Race Rear Wheel				
Double Beadlock Available:	No				
Single Beadlock Available:	Yes				
Lug Nut Type:	Mag Shank - 5/8" Stud Mag Shank SST - 5/8" Stud - SN95 Mustang Only				
Finish:	Polished Black Anodized				
Construction:	Standard or Single Beadlock				
Application	Caliper Clearance (in.)	Bolt Pattern	Size	Backspace (in.)	Weight (lb)
1993 - 2003 Camaro/Firebird - Fbody	5/8"	5x4.5	15x10	7.50	14.0 - Standard 17.0 - SBL
S197 Mustang		5x4.75			
2005 - 2014 Mustang GT (NON-BREMBO)		5x120mm*			
1994 - 2004 Fox Body Mustang - SN95	1-5/8"	5x4.5	15x10	6.50	14.4 - Standard 17.4 - SBL

* 5x120mm bolt pattern requires the use of 14mm lugs

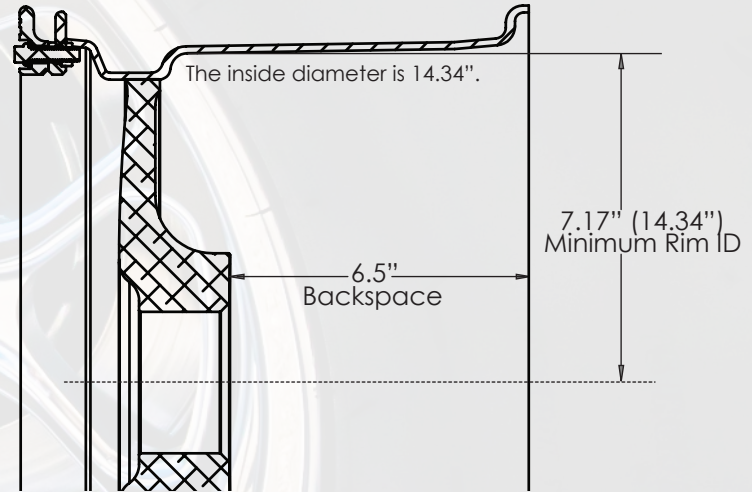
Extra Clearance

BRAKE CLEARANCE

15 X 10 WIN LITE F BODY STANDARD AND SINGLE BEADLOCK



15 X 10 WIN LITE SN95 MUSTANG STANDARD AND SINGLE BEADLOCK



Important:

Caliper measurement cannot exceed 7.09".

This is measured from the center of your Hub/Axle to the highest point of the caliper.

Recommended clearance between the wheel & the caliper is .080 per Wilwood Disc Brakes.





WIN LITE 17 x 4.5



Certification:	SFI 15.2 - Drag Race Front Wheel		
Lug Nut Type:	Mag Shank		
Finish:	Black Powder Coat		
Construction:	One Piece Forged		
Bolt Pattern:	5x4.5, 5x4.75, 5x115mm, or 5x120mm		
Application	Backspace (in.)	Caliper Clearance (in.)	Weight (lb)
17x4.5	2.00	1.25	13
17x4.5	2.75	1.5	12.5



396

1846

285/75R15

BILLET SPECIALTIES



Camaro
SS

NYGONZO

ROCKWELL

REAR WINDOW

WIN LITE 17



50 **Single Beadlock**

Standard

Certification:		Standard - SAE-J2530 Certified Single Beadlock - 17 - Drag Race Rear Wheel			
5/8" Stud Compatible:		Yes			
Double Beadlock Available:		No			
Single Beadlock Available:		Yes 17x9.5 & Up			
Lug Nut Type:		Mag Shank - 5/8" Stud			
Caliper Clearance:		5/8"			
Bolt Pattern:		5x4.5, 5x4.75, 5x5.00, 5x115mm*, 5x120mm*			
Finish:		Black Anodized			
Construction:		Standard or Single Beadlock			
Size	Backspace (in.)		Size	Backspace (in.)	
17x7	3.5 - 4.50		17x9.5	3.5 - 7.25	
17x8	3.5 - 5.50		17x11	3.5 - 8.50	

* 5x115mm and 5x120mm will be drilled for 14mm lugs and use 14mm lugs only.
Backspace built to your specifications. (1/8" increments)





WIN LITE 17



Standard

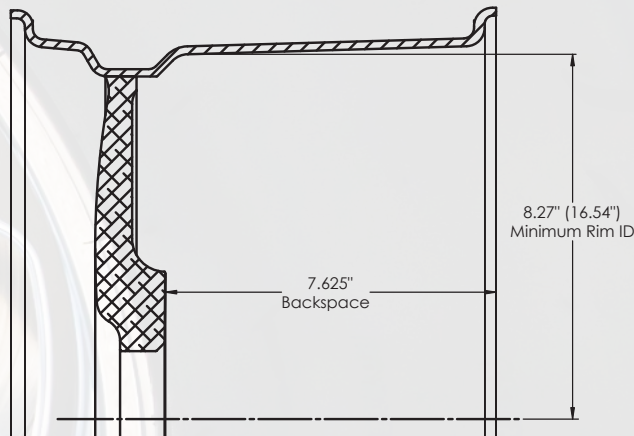
Single Beadlock

S550 MUSTANG

Certification:	SFI 15.1 - Drag Race Rear Wheel				
5/8" Stud Compatible:	Yes				
Double Beadlock Available:	No				
Single Beadlock Available:	Yes				
Lug Nut Type:	Mag Shank - 5/8" Stud				
Caliper Clearance:	3/4"				
Bolt Pattern:	5x4.5				
Finish:	Black Anodized				
Construction:	Standard, Single, or Double Beadlock				
Size	Backspace (in.)	Weight (lb)			
17x10	7.625	16.7 20.3-SBL			

Requires the use of 14mm Lugs

BRAKE CLEARANCE



The highest point of the brake caliper cannot exceed 6.51". This is measured from the center of your hub/axle to the highest point on the caliper. Recommended clearance between the wheel & caliper is .080 per Wilwood Disc Brakes.





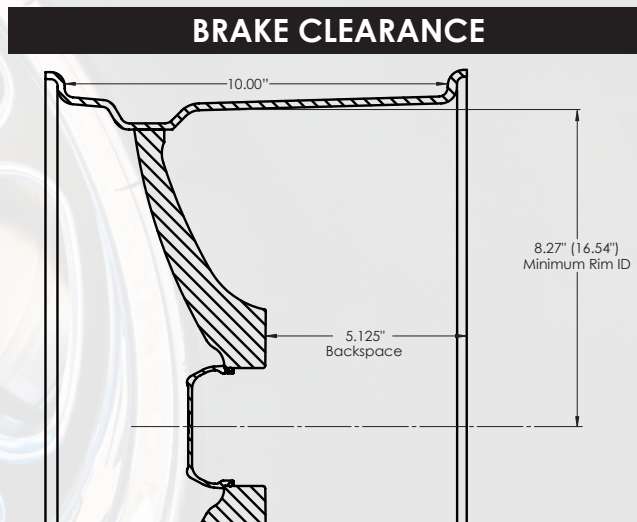
WIN LITE 17



DODGE DEMON

Certification:	SFI 15.2 - Drag Race Front Wheel			
Double Beadlock Available:	No			
Single Beadlock Available:	Yes			
Lug Nut Type:	14mm Mag Shank			
Finish:	Black Powder Coat			
Construction:	Two Piece Welded			
Application	Bolt Pattern	Backspace (in.)	Caliper Clearance (in.)	Weight (lb)
Demon, Hellcat Wide Body, R/T Scat Wide Body, & Red Eye Wide Body	5x115mm	5.125	2	18.1 LBS

Wheel does not accept TPMS Sensors.



The highest point of the brake caliper cannot exceed 6.51". This is measured from the center of your hub/axle to the highest point on the caliper. Recommended clearance between the wheel & caliper is .080 per Wilwood Disc Brakes.

DRAG PACK





LATE MODEL APPLICATIONS

WIN LITE 18 x 5

Certification:	SFI 15.2 - Drag Race Front Wheel			
Double Beadlock Available:	No			
Single Beadlock Available:	No			
Lug Nut Type:	Factory Conical Seat			
Finish:	Black Powder Coat			
Construction:	One Piece Forged			
Application	Bolt Pattern	Backspace (in.)	Caliper Clearance (in.)	Weight (lb)
Challenger/Charger/Hellcat/Magnum SRT8/Demon	5x115mm	2.125	2.125	13.8
Cadillac CTSV 2015+	5x120mm	2.125	2.125	13.8
Gen 6 Camaro SS & ZL1 2016+	5x120mm	2.125	2.125	13.8
C7 Corvette Z06 & Gran Sport 2014-2018	5x4.75	2.125	2.125	13.8
Gen 5 Camaro SS & ZL1 2010-2015	5x120mm	2.500	1.750	14.2
C7 Stingray Corvette 2014-2018	5x4.75	2.500	1.750	14.2
Ford Mustang S550 GT250 & Perf Package 2015 +	5x4.50	2.500	1.750	14.2

Wheels do not accept TPMS Sensors.

DRAG PACK



WIN LITE 17 x 10



Single Beadlock



Standard

DRAG PACK



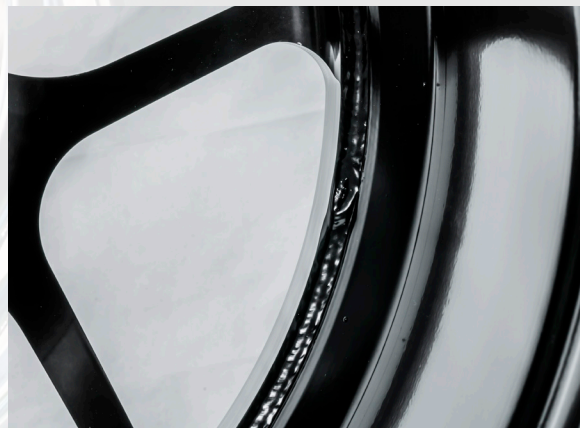
WIN LITE 17 x 10

Certification:	SFI 15.1 - Drag Race Rear Wheel		
Double Beadlock Available:	No		
Single Beadlock Available:	Yes		
Lug Nut Type:	Factory Conical Seat		
Finish:	Black Powder Coat		
Construction:	Standard or Single Beadlock		
Application	Bolt Pattern	Backspace (in.)	Caliper Clearance (in.)
1994 - 2004 SN-95 Mustang 2015 - 2018 Dodge Hellcat 2008 - 2017 Challenger/Charger/Magnum SRT8	5x4.5 5x115mm	6.5	2.0
2010 - 2015 Gen 5 Camaro SS & ZL1 ** 2016+ Gen 6 Camaro SS & ZL1 2016 - 2018 Cadillac CTS-V 2006 - 2013 C6 Corvette Z06	5x4.75 5x120mm	6.95	1.5
2015+ S550 Mustang GT350 & Perf Package 2011 - 2014 S197 Mustang GT 2009 - 2014 Cadillac CTS-V 1993 - 2002 Gen 4 Camaro SS	5x4.5 5x4.75 5x120mm	7.5	1.25
2014 - 2018 C7 Corvette Z06 / GranSport*	5x4.75	6.95	1.5

** Weight starting at 18.6 LBS Non-Beadlock 22.4 LBS Standard Beadlock

* **Must Use aftermarket Drag Spindles - Available from Carlyle Racing or LG Motorsports**

DRAG PACK



COMP





541
FS/DI:

L. DEFORREST

BilletSpecialties

ARROW
INGS · CABINETS · PIT CARTS

Crew Chief Pro
A REVOLUTIONARY ONLINE RACING SOFTWARE

VP
1 AEROMOTIVE

MSD
Auto Meter
K&N
SIMPSON
ARP
RACEPAK
Hoosier

SERIES

COMP5 - Standard Rear



Certification:	SFI 15.1 - Drag Race Rear Wheel				
5/8" Stud Compatible:	Yes				
Double Beadlock Available:	Yes 15x10 & Up				
Single Beadlock Available:	No				
Lug Nut Type:	Mag Shank - 5/8" Stud				
Caliper Clearance:	.845"				
Bolt Pattern:	5x4.50, 5x4.75 5x5.00 - 15x14, 15x15 & 16x16 Only				
Finish:	Polished or Black Anodized				
Construction:	Standard or Double Beadlock				
Size	Backspace (in.)	Weight (lb)	Size	Backspace (in.)	Weight (lb)
15x10	4, 5, & 6 **	13	15x15	4 & 5 **	13.8
15x12	4, 5, & 6 **	12.8	16x16	4, 5, & 6 **	15.4
15x14	4 & 5 **	14			

** Backspace in 1 inch increments only.

Important: Not for Street Use

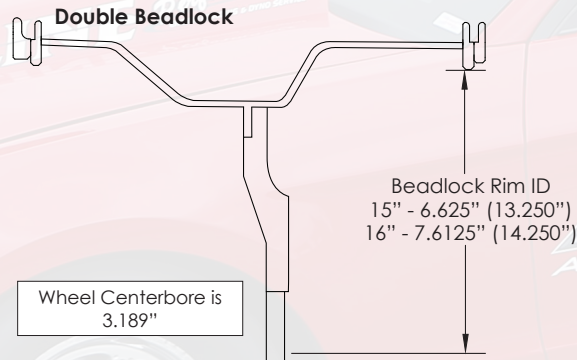
COMP5 - Double Beadlock

Certification:	SFI 15.1 - Drag Race Rear Wheel				
5/8" Stud Compatible:	Yes				
Double Beadlock Available:	Yes 15x10 & Up				
Lug Nut Type:	Mag Shank - 5/8" Stud				
Caliper Clearance:	.845"				
Bolt Pattern:	5x4.50, 5x4.75 5x5.00 - 15x14, 15x15 & 16x16 Only				
Finish:	Polished or Black Anodized				
Construction:	Double Beadlock				
Size	Backspace (in.)	Weight (lb)	Size	Backspace (in.)	Weight (lb)
15x10	4	19.8	15x15	4 & 5 **	21.2
15x12	4 & 5 **	20.2	16x16	4 & 5 **	22.6
15x14	4 & 5 **	20.8			

** Backspace in 1 inch increments only.

Important: Not for Street Use

BRAKE CLEARANCE









COMP5 Spindle Mount



Certification:	15.2 - Drag Race Front Wheel		
Double Beadlock Available:	No		
Single Beadlock Available:	No		
Finish:	Polished or Black Anodized		
Construction:	One Piece Spindle Mount		
Spindle Type:	Size	Backspace (in.)	Weight (lb)
Strange Ultra to 2010	15x3.5	1.75	8.6
Strange GT / Santhuff	15x3.5	1.75	8.6
Strange Ultra 2011 & Up	15x3.5	1.75	8.6
Anglia / Lamb *	15x3.5	1.75	8.6
Anglia	17x2.125	1.06	6.5

* includes Anglia bearing kit only.



COMP5 - Bolt-On



Certification:	15.2 - Drag Race Front Wheel		
Lug Nut Type:	1/2" Mag Shank		
Caliper Clearance:	15" - .20" / 17" - .875"		
Finish:	Polished or Black Anodized		
Construction:	One Piece Forged		
Size	Backspace (in.)	Bolt Pattern	Weight (lb)
15x3.5	1.75	5x4.5	7.6
15x3.5	2.25	5x4.5	8.0
15x3.5	1.75	5x4.75	7.6
15x3.5	2.25	5x4.75	8.0
17x4.5	2.75	5x4.5	9.8
17x4.5	2.75	5x4.75	9.8





N/T
41

PETE SCHRAEGER

PUB

MONEY

7/11

COMP7 - Standard Rear



Certification:			SFI 15.1 - Drag Race Rear Wheel		
5/8" Stud Compatible:			Yes		
Double Beadlock Available:			Yes 15x10 & Up		
Single Beadlock Available:			No		
Lug Nut Type:			Mag Shank - 5/8" Stud		
Caliper Clearance:			.845"		
Bolt Pattern:			5x4.50, 5x4.75 5x5.00 - 15x14, 15x15 & 16x16 Only		
Finish:			Polished or Black Anodized		
Construction:			Standard or Double Beadlock		
Size	Backspace (in.)	Weight (lb)	Size	Backspace (in.)	Weight (lb)
15x10	4, 5, & 6 **	13.7	15x15	4 & 5 **	15.8
15x12	4, 5, & 6 **	14.7	16x16	4, 5, & 6 **	16.5
15x14	4 & 5 **	15.6			

** Backspace in 1 inch increments only.

Important: Not for Street Use

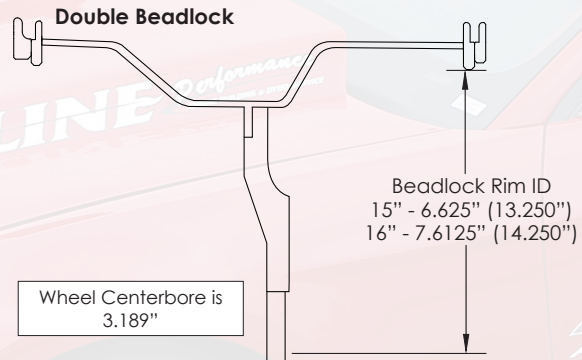
COMP7 - Double Beadlock

Certification:	SFI 15.1 - Drag Race Rear Wheel				
5/8" Stud Compatible:	Yes				
Double Beadlock Available:	Yes 15x10 & Up				
Lug Nut Type:	Mag Shank - 5/8" Stud				
Caliper Clearance:	.845"				
Bolt Pattern:	5x4.50, 5x4.75 5x5.00 - 15x14, 15x15 & 16x16 Only				
Finish:	Polished or Black Anodized				
Construction:	Double Beadlock				
Size	Backspace (in.)	Weight (lb)	Size	Backspace (in.)	Weight (lb)
15x10	4	19	15x15	4 & 5 **	21.5
15x12	4 & 5 **	20.3	16x16	4 & 5 **	23.2
15x14	4 & 5 **	21			

** Backspace in 1 inch increments only.

Important: Not for Street Use

BRAKE CLEARANCE





COMP7 Spindle Mount



15x3.5



17x2.125

Certification:	15.2 - Drag Race Front Wheel		
Double Beadlock Available:	No		
Single Beadlock Available:	No		
Finish:	Black Anodized		
Construction:	One Piece Spindle Mount		
Spindle Type:	Size	Backspace (in.)	Weight (lb)
Strange Ultra to 2010	15x3.5	1.75	8.4
Strange GT / Santhuff	15x3.5	1.75	9.6
Strange Ultra 2011 & Up	15x3.5	1.75	8.4
Anglia / Lamb *	15x3.5	1.75	8.4
Anglia	17x2.125	1.06	7.6

* includes Anglia bearing kit only.

COMP7 - Bolt-On

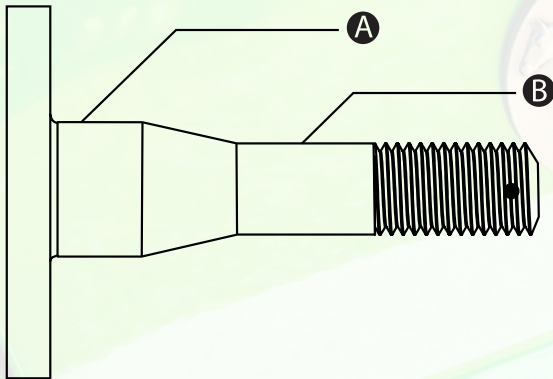
Certification:	15.2 - Drag Race Front Wheel		
Lug Nut Type:	1/2" Mag Shank		
Caliper Clearance:	15" - .20" / 17" - .875"		
Finish:	Black Anodized		
Construction:	One Piece Forged		
Size	Backspace (in.)	Bolt Pattern	Weight (lb)
15x3.5	1.75	5x4.5	7.5
15x3.5	2.25	5x4.5	8.0
15x3.5	1.75	5x4.75	7.5
15x3.5	2.25	5x4.75	8.0
17x4.5	2.75	5x4.5	9.8
17x4.5	2.75	5x4.75	9.8





COMP SERIES

Spindle Mount Wheel Identification



Anglia/Lamb/Stiletto/Spindle

- A** = .984 DIA (Bearing Cone #07097)
- B** = .625 DIA (Bearing Cone #03062)

Strange Ultra Strut to 2010

- A** = 1.0625 DIA (Bearing Cone #L44649)
- B** = .688 DIA (Bearing Cone #LM11749)

Strange Ultra Strut 2011 & UP

- A** = 1.0625 DIA (Bearing Cone #L44649)
- B** = .7495 DIA (Bearing Cone #A6075)

Strange GT/Stanthuff Strut

- A** = 1.251 DIA (Bearing Cone #LM67048)
- B** = .751 DIA (Bearing Cone #LM11949)

WHEEL ACCESSORIES

LUG NUTS

Mag Shank - CLOSED END



*1/2 Mag Shank for use with 15x3.5 and 15x4 with 2.25 Caliper Clearance:

Part #	Size	Length	Per
999962	12mm-1.5	3/4"	10pk.
999963*	12mm-1.5	1/2"	10pk.
999990	7/16-20	3/4"	10pk.
999991*	7/16-20	1/2"	10pk.
999994	1/2-20	3/4"	10pk.
999995*	1/2-20	1/2"	10pk.

Mag Shank - OPEN END



*1/2 Mag Shank for use with 15x3.5 and 15x4 with 2.25 Caliper Clearance:

Part #	Size	Length	Per
999964	12mm-1.5	3/4"	10pk.
999965*	12mm-1.5	1/2"	10pk.
999992	7/16-20	3/4"	10pk.
999993*	7/16-20	1/2"	10pk.
999996	1/2-20	3/4"	10pk.
999997*	1/2-20	1/2"	10pk.

SN95 Mustang 6.5 Backspace Wheels



Part #	Size	Mag Shank
999956	1/2-20 x 1.38"	Closed
999957	1/2-20 x 1.38"	Open

5x115 & 5x120 Bolt Patterns Only



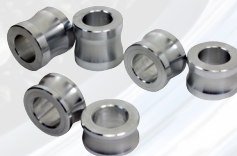
Part #	Size	Mag Shank
999959	14mm -1.5	Open

O.E RACE LUG NUTS (StreetLite/Win Lite) for vehicles with 5/8" Studs



Part #	Size	Per
999998	5/8-18	10pk.

WHEEL STUD SPACERS



Part #	Length	Per
999495	.625	Pair
999496	.825	Pair
999497	1.125	Pair

WHEEL ACCESSORIES

WHEEL SPACERS

ALL WHEEL SPACERS HAVE A 3.080" CENTERBORE

Wheel spacers are precision machined from 6061-T6 aluminum to ensure trueness, quality & strength. To ensure proper fitment you will need to measure the overall diameter of the bolt pad area of your wheels before ordering.

- Billet Specialties recommends the use of E-T style lug nuts for proper thread engagement. E-T lug nuts allow for an extra 1/4" of thread engagement.
- Stud length must be long enough for the lug nut to engage the stud a minimum length equal to the diameter of the stud.



STREET LITE / WIN LITE
WHEEL SPACERS

Wheel Size	Bolt Pattern	Spacer Size	Part #
15x3.5 - 15x10	5x4.50 / 5x4.75	1/4" (.25")	WS3085625
15x3.5 - 15x10	5x4.50 / 5x4.75	1/2" (.50")	WS3085650

Bolt Pad Dia. 5.75"



UNIVERSAL
WHEEL SPACER

Bolt Pattern	Spacer Size	Part #
5x4.25, 5x4.50, 5x4.75, 5x5.00	1/4" (.25")	WSG5L250
5x4.25, 5x4.50, 5x4.75, 5x5.00	3/8" (.375")	WSG5L375
5x4.25, 5x4.50, 5x4.75, 5x5.00	1/2" (.50")	WSG5L500
5x4.25, 5x4.50, 5x4.75, 5x5.00	3/4" (.75")	WSG5L750

Replacement Center Caps for Street Life Wheels

P/N 999098

- Diameter: 2-7/8"
- Exposed Lug



1/2" Cap Spacer For Street Life Center Caps

1/2" spacer for vehicles with long front hubs
P/N 999598



Need Extra Spindle Clearance?
Our cap spacer will give you an extra 1/2"

5 Pack of Replacement Screws

P/N 999498



Replacement Beadlock Rings



Pairs:

15" - P/N 999115

16" - P/N 999116

Single:

17" - P/N 999118

Drag Pack Single:

17" - P/N 999119

- Includes Hardware
- Black Anodized Finish
- 6061-T6 Aluminum

Replacement Center Caps for Win Life Wheels



O-Ring Cap

P/N 999081B

P/N 999081 (polished)

2-1/2" Cap

P/N 999084B

3-1/8" Cap

P/N 999083B



Replacement Center Caps Comp5

P/N CS9150 - Ultra, Anglia, Lamb-Polished

P/N CS9152 - GT, Santhuff-Polished

P/N CSB9150 - Ultra, Anglia Lamb-Black

P/N CSB9152 - GT, Santhuff-Black

Replacement O-Ring:

P/N CS9151 (Cap #CS9150)

P/N CS9153 (Cap #CS9152)

Replacement Beadlock Hardware

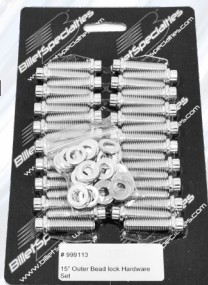
15" - P/N 999113

16" - P/N 999114

17" - P/N 999117

Includes;


- Grade 8 Zinc plated
12pt bolts and Flat washers



Chrome Valve Stems - Bolt-In

P/N 999900



A close-up photograph of a car's front fender, showing a circular emblem with a horse and rider. The car is painted a vibrant, glossy red. The emblem is a circular badge with a relief of a horse and rider. The background is a semi-transparent dark grey rectangle containing text.

For Terms & Conditions, Warranty, and all other Technical Information please visit:

WWW.BILLETSSPECIALTIES.COM





BilletSpecialties

WWW.BILLETSPCIALTIES.COM

877 240-4183



DWSG0219