



MADE IN USA

***BilletSpecialties***

FORGED WHEELS

# FULL LINE WHEEL CATALOG

**VOL #31**



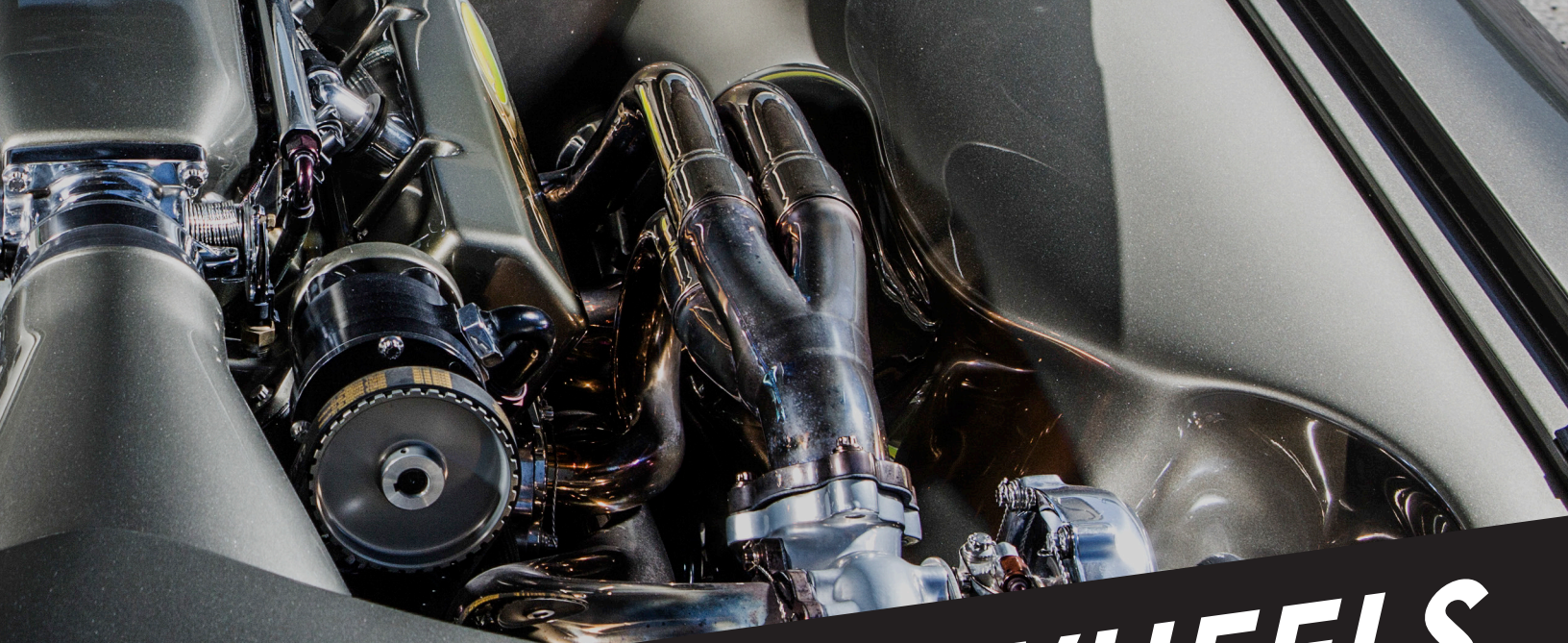
# TABLE OF CONTENTS

Vintage Series . . . . .	03
Vintec Series . . . . .	08
OE Series . . . . .	09
Legends Series. . . . .	11
Profile Collection . . . . .	13
Pro Touring . . . . .	15
B-Forged . . . . .	19
SLC Series. . . . .	27
SLG Series. . . . .	29
BLVD Series. . . . .	31
GS Series . . . . .	37
Race Series	
Street Lite. . . . .	39
Win Lite . . . . .	44
Drag Pack . . . . .	49
Comp Series . . . . .	51
Finish Options. . . . .	57

# 3 DECADES

*Billet Specialties is not responsible for misprints.*





# OF CUSTOM WHEELS



All Billet Specialties Forged Wheels  
are custom built per order.







### **Knuckle Dish**

Polished Shown

# VINTAGE SERIES

#### **History Re-defined by Styling**

Wheels that have defined hot rodding through the years are mixed with new styles that bring back vintage styling with updated features. Available in a wide array of sizes, widths and custom backspacing, custom built to fit your vehicle. Each wheel is precision machined with multi-axis technology and hand finished to an unrivaled polished or powder coat finish. Hex and spinner cap options are available on select styles.



### **Reaper**

Available in Extreme \*

18 • 19 • 20 • 22

#### **Reaper Extreme**

Gunmetal Matte Shown  
See Optional Finishes pg. 57

#### **Reaper Extreme**

Bronze Matte Shown  
See Optional Finishes pg. 57





**Bonneville**

Available in Extreme \*

17 • 18 • 19 • 20 • 22 • 24 • 26



**Bonneville C**

Available in Extreme \*

17 • 18 • 19 • 20 • 22 • 24 • 26



**Bonneville G**

Available in Extreme \*

17 • 18 • 19 • 20 • 22 • 24 • 26



**Bonneville S**

Available in Extreme \*

17 • 18 • 19 • 20 • 22 • 24 • 26



**Heritage**

17 • 18 • 19 • 20 • 22



**Heritage C**

17 • 18 • 19 • 20 • 22



**Heritage G**

17 • 18 • 19 • 20 • 22



**Heritage S**

17 • 18 • 19 • 20 • 22



**Legacy 2**

Available in Extreme \*

17 • 18 • 19 • 20 • 22

Includes Spinner Cap



**Legacy 2 C**

Available in Extreme \*

17 • 18 • 19 • 20 • 22

Includes Spinner Cap



**Legacy 2 G**

Available in Extreme \*

17 • 18 • 19 • 20 • 22

Includes Spinner Cap



**Legacy 2 S**

Available in Extreme \*

17 • 18 • 19 • 20 • 22

Includes Spinner Cap

### **"C" Finish**



**C = Brushed/Polished with Clear**

### **"G" Finish**



**G = Vintage Grey Textured Finish**

### **"S" Finish**



**S = Brushed/Polished with Smoke Gloss**





**Knuckle**

17 • 18 • 19 • 20 • 22



**Knuckle C**  
Dish Profile

17 • 18 • 19 • 20 • 22



**Knuckle S**  
Extreme Profile

20 • 22



**Grinder**

17 • 18 • 19 • 20 • 22



**Grinder C**  
Dish Profile

17 • 18 • 19 • 20 • 22



**Grinder S**  
Extreme Profile

20 • 22



**Sprint**  
Concave Shallow

Available with a  
Standard Center Profile  
17 • 18 • 19 • 20 • 22 • 24 • 26



**Sprint C**  
Concave Deep

18 • 19 • 20 • 22 • 24



**Sprint S**  
Extreme Profile

20 • 22





**Legacy**

15 • 17

Knock Off's Sold Separately



**Legacy G**

15 • 17

Knock Off's Sold Separately



**Dragster**

15 • 17

Knock Off's Sold Separately



**Crossover**

Available in Extreme \*

17 • 18 • 19 • 20 • 22



**Crossover C**

Available in Extreme \*

17 • 18 • 19 • 20 • 22



**Crossover G**

Available in Extreme \*

17 • 18 • 19 • 20 • 22



**Sprint C**  
Concave Deep



# VINTAGE SERIES

## FORGING PROFILES

What is the difference between a Standard, Dish, Concave Shallow, Concave Deep and Extreme Profiles?

**Standard** - The center is flat or convex

Often used on the front for maximum backspace.  
( Can also be used on the rear. )

Available In: 17 • 18 • 19 • 20 • 22 • 24 • 26

**Dish** - The center has a dish appearance.

Can be used front or rear.

Available In: 17 • 18 • 19 • 20 • 22

**Concave Shallow** - The center has a slight concave dish to it.

Can be used front or rear.

Available In: 18 • 19 • 20 • 22 • 24

**Concave Deep** - The center has a definitive concave profile.

Can only be used in the rear in widths of 10" and greater.

Available In: 18 • 19 • 20 • 22 • 24

**Extreme** - The center has an extreme concave profile.

Can only be used in the rear in widths of 10" and greater and  
only available in 20" & 22" diameters.

Minimum backspace recommended.



**Grinder**  
Extreme  
Polished Shown



# VINTEC SERIES

## Style that Stood the Test of Time

When we introduced the Vintec Series there was a resounding response that's made it a legend. The timeless design of these wheels have made their way on to countless street rods, muscle cars and classic trucks all over the world. Available with our lug-covering hex cap (standard) or optional spinner cap upgrade.



### ***Vintec Dish***

15 • 17



**Optional Spinner Cap Available**

### ***SLD 89***

17 • 18 • 20 • 22



# ORIGINAL EQUIPMENT SERIES

## Factory Style on Steroids!

Billet Specialties Original Equipment Series wheels pump up the look and size of the past while allowing clearance for performance brake systems. Select from either a soft lip barrel for a modern look or for a more traditional look select a conventional stepped barrel. Two hub cap options are also offered, choose from a 7" diameter snap-in style cap provision or a 10" clip-on cap provision.

### *Motor City 10*

Custom Finish: Sea Foam  
Conventional Barrel  
10" Clip-On Cap



### *Motor City 7*

Custom Finish: Hot Rod Red  
Conventional Barrel  
7" Snap-In Cap



### *Suave SL10*

Custom Finish: Black Gloss  
Soft Lip Barrel  
10" Clip-On Cap

### *Suave 7*

Custom Finish: Banana Cream  
Conventional Barrel  
7" Snap-In Cap





### ***Suave SL10***

Custom Finish: Hot Rod Red  
Soft Lip Barrel



- Conventional Barrel  
18 • 20
  - Soft Lip Barrel  
18 • 19 • 20 • 22 • 24 • 26
  - Multiple Finish Options
  - Available in Raw Machine Finish\*
  - \*Ready for you to apply your own custom finish
  - Center Caps Sold Separately
- Visit [www.billet specialties.com](http://www.billet specialties.com)

Available in colors shown.  
For custom color options  
please contact our sales  
department with your  
specific needs.

### ***Motor City SL7***

Custom Finish: Titan Gray  
Soft Lip Barrel



# LEGENDS SERIES

## Americana Styling at its Best

Billet Specialties Style and Quality at an entry level price. The Legends Series offers three styles that look great on muscle cars, street rods and classic trucks. All of which have set trends in the hot rod world.



### *Speedway*

Available in  
Titanium or Polished Finish  
18 • 20 • 22



### *Speedway*

Titanium Finish Shown





**Mag G**

Bolt on Spinner Cap  
Available for Mag Wheels



**Mag**

17 • 18 • 20



**Mag G**

17 • 18 • 20



**Mag B**

17 • 18 • 20



**Dagger**

17 • 18 • 20



**Dagger G**

17 • 18 • 20



**Dagger B**

17 • 18 • 20



# PROFILE COLLECTION

## *Stiletto*

Polished Shown

### Machined Excellence

The Profile Collection is designed for the discriminating enthusiast. The blend of multiple surfaces coming together that create the dramatic features of these wheels are produced from millions of lines of machining code executed on state-of-the-art CNC machines. When you're looking to make a statement look to the Profile Collection.

## *Stiletto Extreme*

Polished Shown

20 • 22

## *Stiletto*

Polished Shown

17 • 18 • 20 • 22





***Pinnacle***

Available in Extreme \*

17 • 18 • 20 • 22



***Flare***

Available in Extreme \*

17 • 18 • 20 • 22



***Velocity***

Available in Extreme \*

17 • 18 • 20 • 22



***Rail***

Available in Extreme \*

17 • 18 • 20 • 22



***Rail 6***

22 Only



***Fuelie***

Available in Extreme \*

17 • 18 • 20 • 22



***Rat Tail***

Available in Extreme \*

17 • 18 • 20 • 22



***Rat Tail 6***

22 Only



***Stiletto 6***

22 Only



# PRO TOURING SERIES



Concave Deep

Concave Shallow

**Hydro**

Bronze Matte Shown

## Corner Carving Performance

Aggressive styling and incredibly lightweight, the Pro Touring Series is engineered for today's big brakes and performance suspensions.

***Destined to be driven.***



Concave Shallow

Brushed Clear Gloss Shown

**Hydro**

Concave Shallow & Concave Deep

Concave Deep

Brushed Clear Gloss Shown





***Camber***

**Concave Shallow & Concave Deep**  
Gunmetal Gloss Shown



***G-Spec***

**Contour • Concave Shallow  
& Concave Deep**  
Black Matte Shown



***GTR***

**Concave Shallow & Concave Deep**  
Brushed Smoke Gloss Shown



***Prism***

**Concave Shallow & Concave Deep**  
Brushed Brown Gloss Shown



***Daytona***

**Contour • Concave Shallow  
& Concave Deep**  
Brushed Clear Gloss Shown



***Gran Prix***

**Contour Only**  
Black Gloss Shown



***Razor***

**Concave Shallow & Concave Deep**  
Brushed Clear Gloss Shown



***Freeway***

**Concave Shallow & Concave Deep**  
Titanium Shown



***Toploader***

**Concave Shallow & Concave Deep**  
Black Matte Shown

**See Page 17 for Available Sizes**



# PRO TOURING SERIES FORGING PROFILES



**Available In:**  
18 • 19 • 20 • 22  
24 • 26

**Contour** - For maximum offset and big brake clearance



**Available In:**  
18 • 19 • 20 • 22

**Concave Shallow** - Big Brake Clearance with a semi flat Concave Center



**Available In:**  
18 • 19 • 20 • 22

**Concave Deep** - For a maximum concave profile



Concave Shallow

**Wedge**

Brushed Clear Gloss Shown

**Powder Coated Rim Option Shown**



**Gran Sport**

**Contour • Concave Shallow  
& Concave Deep**  
Black Gloss Shown



**Laguna**

**Contour Only**  
Gunmetal Gloss Shown



**Sebring**

**Contour Only**  
Brushed Smoke Gloss Shown





Concave Deep



**Concave Deep**  
Black Matte Shown

**Wedge**  
Concave Shallow & Concave Deep

**Concave Shallow**  
Gunmetal Gloss Shown



**B-FORGED**  
PERFORMANCE WHEELS

**589**

Shown in SXL Extreme  
Polished Gold Gloss Center  
Black Gloss Outer Rim



### Hand Crafted Forged Performance

After setting trends in the custom wheel industry for over thirty years, Billet Specialties launched B-Forged Performance wheels allowing us to extend our design and manufacturing expertise to focus on Pro Touring, Exotic and Luxury wheel markets. This solid foundation lets us push the limits in design and finish options to target an additional group of discriminating customers and expand possibilities. With complete control of the process, including design, engineering, machining, finishing and final assembly - B-Forged Performance Wheels ensures you receive the finest wheels in the industry.



**180**

Shown in SXL Extreme  
Midnight Blue Matte Center  
Brushed Clear Matte Outer Rim



**225**

Shown in Touring Flat  
Bronze Matte Center  
Polished Outer Rim



**252**

Shown in SXL Extreme  
Copper Gloss Center  
Black Matte Outer Rim



**315**

Shown in RXL Mid  
Brushed Brown Matte Center  
Black Gloss Outer Rim



**393**

Shown in SXL Mid  
Polished Smoke Gloss Center  
Polished Smoke Gloss Outer Rim



**450**

Shown in RXL Flat  
Brushed Clear Gloss Center  
Polished Outer Rim





**455**

Shown in SXL Mid  
Bronze Matte Center  
Bronze Gloss Outer Rim



**500**

Shown in RXL Extreme  
Gunmetal Matte Center  
Gunmetal Matte Outer Rim



**511**

Shown in Touring Mid  
Titanium Center  
Polished Outer Rim



**530**

Shown in RXL Extreme  
Gunmetal Matte Center  
Brushed Clear Gloss Outer Rim



**570**

Shown in RXL Extreme  
Brushed Smoke Gloss Center  
Polished Outer Rim



**589**

Shown in SXL Mid  
Polished Brown Gloss Center  
Polished Outer Rim



**600**

Shown in Duo-Block Mid  
Black Matte



**601**

Shown in Touring Flat  
Polished Face with  
Brushed Windows Center  
Brushed Clear Gloss Outer Rim



**710**

Shown in SXL Mid  
Brushed Gold Matte Center  
Polished Outer Rim





**767**

Shown in Touring Flat  
Bronze Matte Center  
Bronze Matte Outer Rim



**768**

Shown in RXL Extreme  
Brushed Blue Gloss Center  
Brushed Blue Gloss Outer Rim



**790**

Shown in Touring Mid  
Gunmetal Gloss Center  
Gunmetal Gloss Outer Rim



**791**

Shown in RXL Extreme  
Brushed Red Matte  
Brushed Red Matte Outer Rim



**792**

Shown in RXL Extreme • 6 Lug Applications  
Polished Smoke Gloss Center  
Polished Smoke Gloss Outer Rim



**829**

Shown in Touring Flat  
Gunmetal Matte Center  
Brushed Clear Gloss Outer Rim



**768**

Shown in RXL Extreme  
Black Matte Center  
Brushed Red Gloss Outer Rim





**961**

Shown in Duo-Block Extreme  
Gunmetal Gloss



**961**

Shown in Duo-Block Extreme  
Brushed Copper Gloss



## FORGING PROFILES

### TOURING SERIES

#### Concave Styling

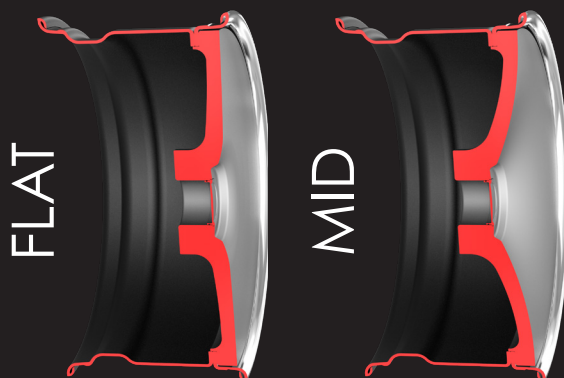
Designed with great looks and performance in mind. These wheels have similar characteristics to the RXL Series, but with a maximum leg extension of 1.5 inches, resulting in a lighter weight wheel. Offered in 2 forging profiles for the perfect staggered fitment.

#### SIZES:

18 • 19 • 20 • 21 • 22 • 24

Widths up to 15" wide

#### AVAILABLE TOURING FORGING PROFILES



### DUO SERIES

#### Concave Styling

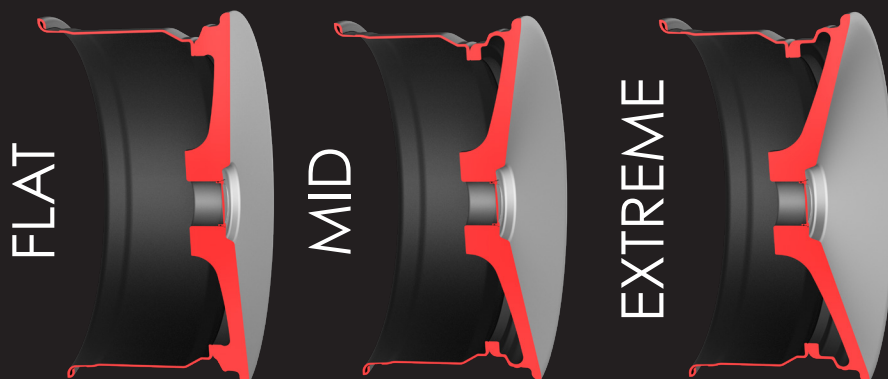
Looks of a mono-block wheel with extreme concave face profiles and design features that extend to the rim edge. The Duo Series is constructed of two components – the outer rim and center profile as 1 piece with a fastened inner rim. This Series allows you to take a mono-block style and customize it with different center and inner rim finish options with exposed or hidden hardware. Offered in 3 forging profiles to accommodate any vehicle fitment.

#### SIZES:

19 • 20 • 21 • 22 • 24

Widths up to 14" wide

#### AVAILABLE DUO FORGING PROFILES





## RXL SERIES

### Reverse Lip – Extreme Concave Styling

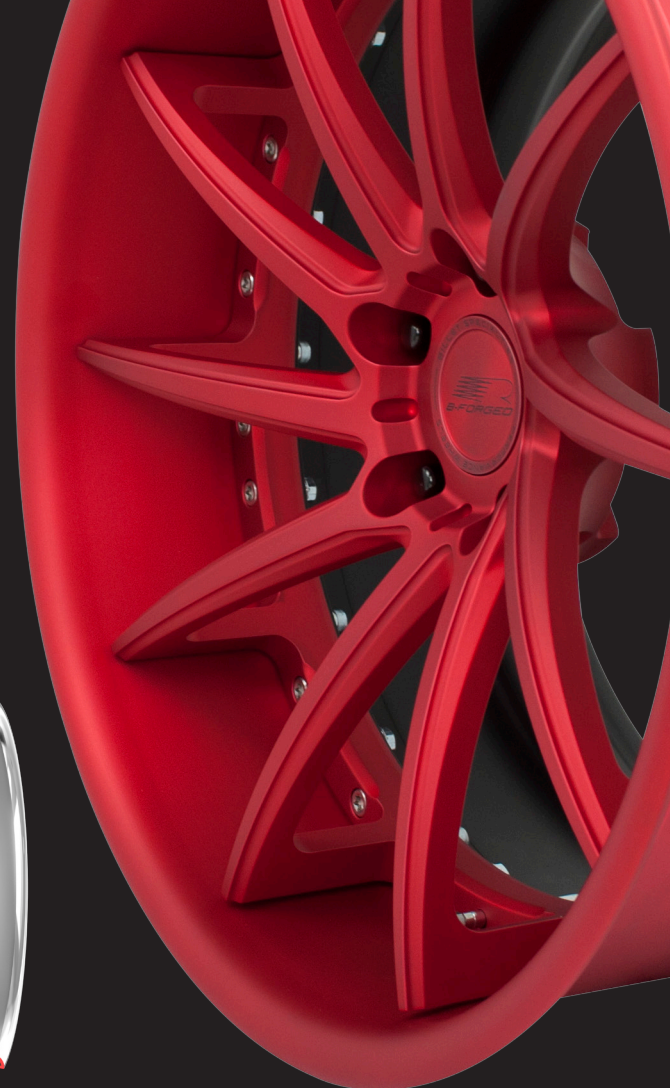
Designed and styled to expand the limits of aesthetics while staggering the front and rear center profiles. The RXL Series allows for a larger outer rim half giving the wheel a deeper look with aggressive styling. Available in 3 forging profiles with up to 4.5 inches of leg extension to accommodate any vehicle fitment.

#### SIZES:

18 • 19 • 20 • 21 • 22 • 24

Widths up to 15" wide

### AVAILABLE RXL FORGING PROFILES



## SXL SERIES

### Step Lip – Extreme Concave Styling

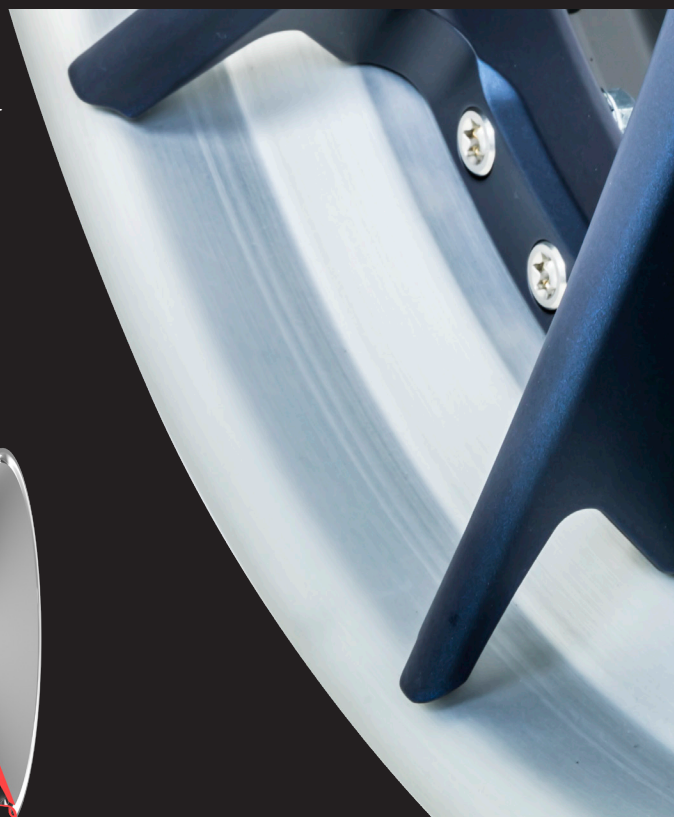
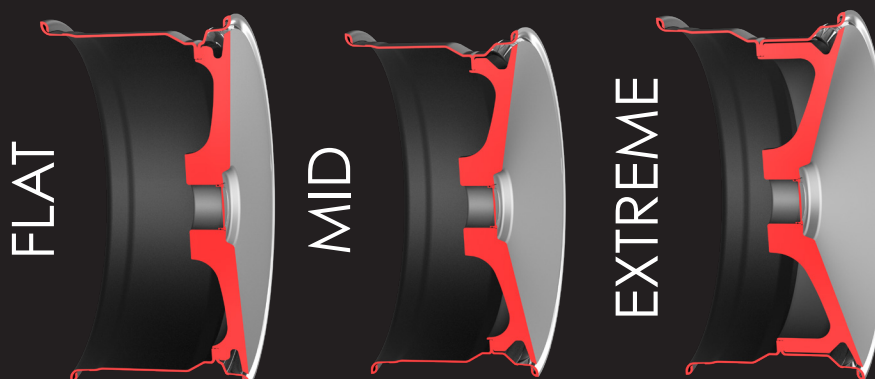
Designed with a floating spoke feature that extends to the edge of the rim for an aggressive and bold performance look, featuring staggered front and rear center profiles. 3 forging profiles available to accommodate your vehicle fitment with leg extensions up to 4.5 inches.

#### SIZES:

19 • 20 • 21 • 22 • 24

Widths up to 15" wide

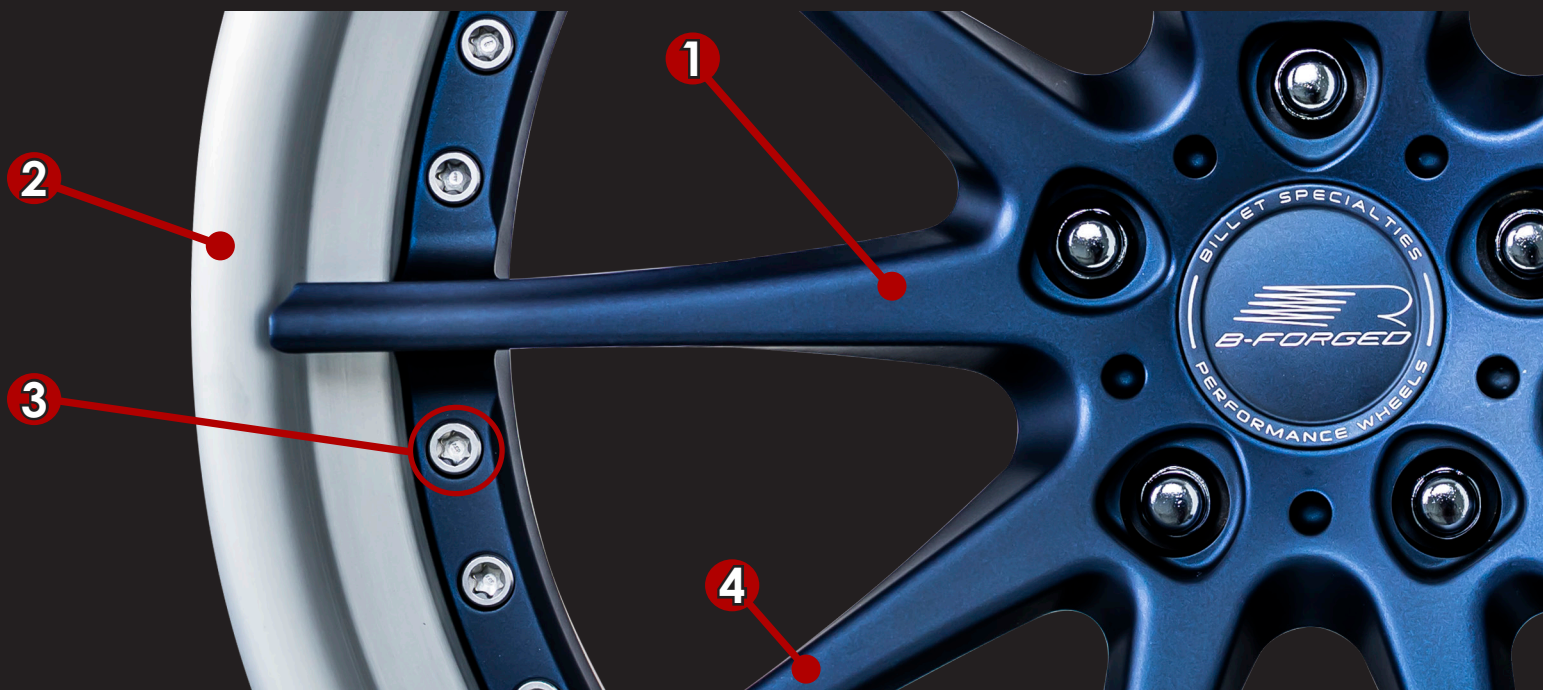
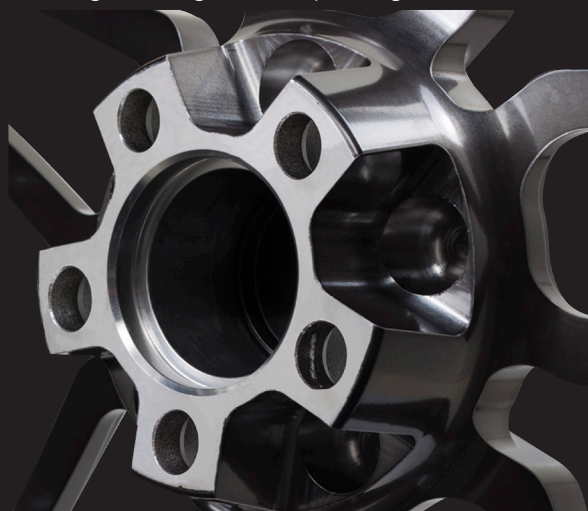
### AVAILABLE SXL FORGING PROFILES





# STANDARD FEATURES

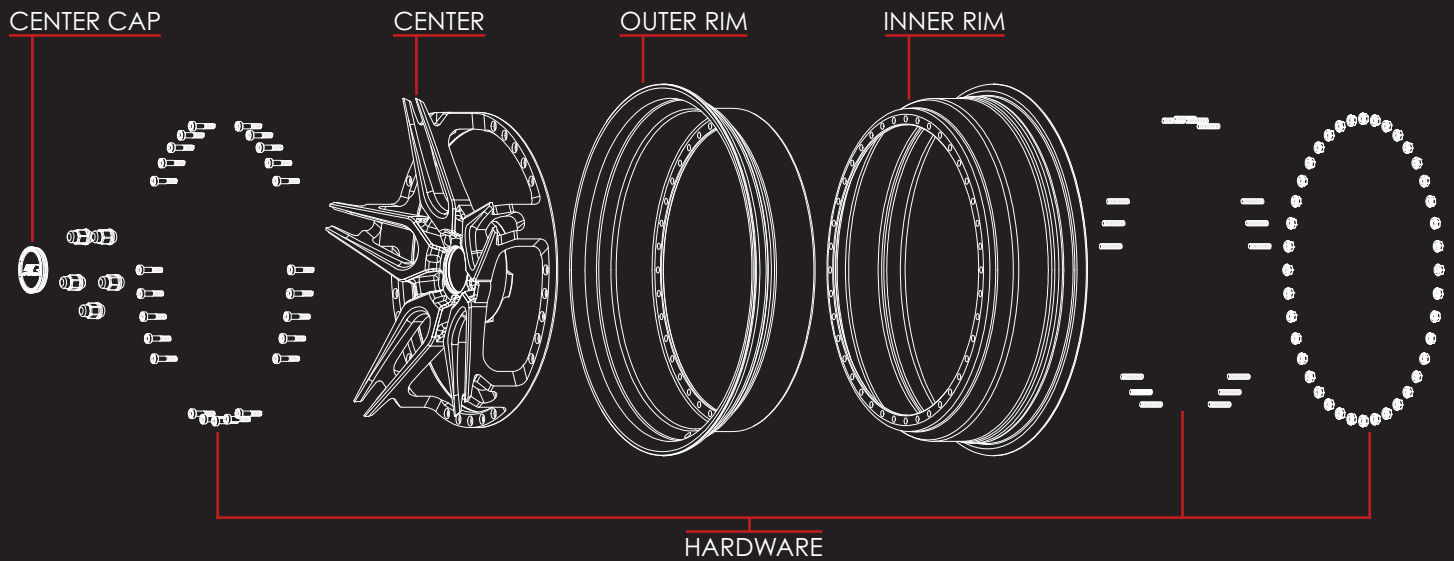
- 1 Center Material**  
Precision Forged 6061-T6 Aluminum.
- 2 Rim Halves**  
Spun 6000 Series aluminum rims provide weight savings and strength.
- 3 Exposed or Hidden Hardware**  
Proprietary fasteners are used to assemble all B-Forged wheels.
- 4 In-House Finishing**  
Choose from a variety of standard powder coat finishes.
- 5 Modular Construction**  
Allows for versatility in sizes and style.
- 6 Inner Rim Half**  
Standard Black Matte Finish
- 7 Recessed Bolt Pad**  
For weight savings on every B-Forged Wheel.



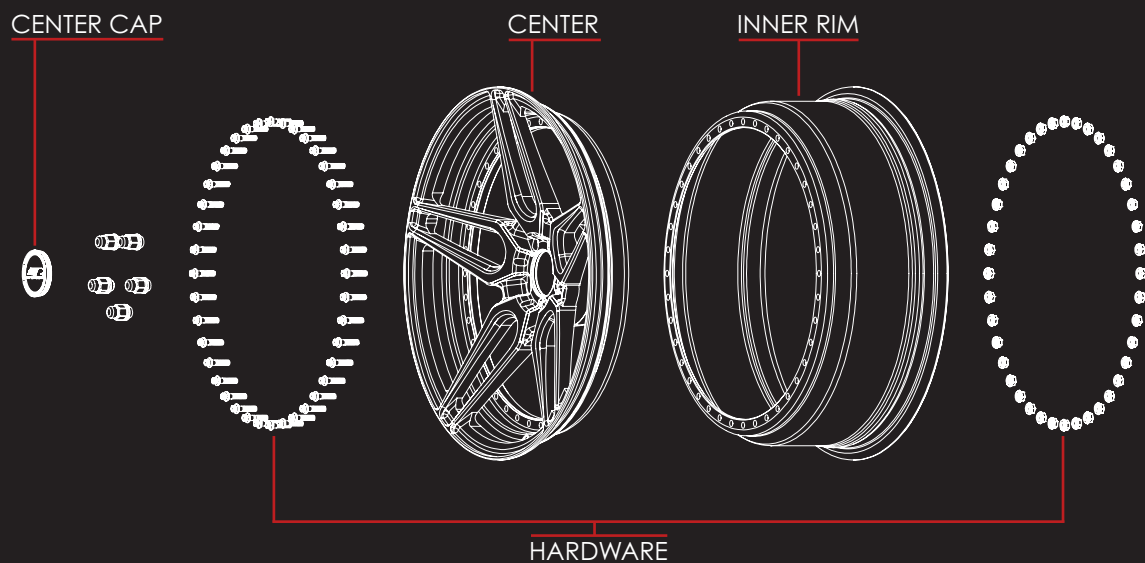


## 5 MODULAR WHEEL CONSTRUCTION

### THREE-PIECE WHEELS: SXL, RXL, & TOURING



### TWO-PIECE WHEELS: DUO





# SLC SERIES

## A Cut Above the Rest

The SLC Series features wheels that tastefully depart from the ordinary and predictable to breathe some excitement into your ride. The soft flowing detail of each spoke is a telltale sign that the SLC Series is so much more than the ordinary straight-cut billet wheel. Our attention to detail pays off in styling that screams excellence. Custom built just for you, these stunning wheels are ready for big brakes and are available in a wide range of diameters 17 - 26.



### **Turbine** *Extreme*

Polished Face with  
Brushed Windows Shown  
20 • 22



### **Turbine**

Polished Face with  
Brushed Windows Shown





**Fury**

17 • 18 • 19 • 20 • 22 • 24 • 26

Polished Shown



**GTO**

17 • 18 • 19 • 20 • 22 • 24 • 26

Polished Shown



**Invader**

Available in Extreme \*

17 • 18 • 19 • 20 • 22 • 24 • 26

Titanium Shown



**SLC62**

17 • 18 • 19 • 20 • 22 • 24 • 26



**SLC75**

17 • 18 • 19 • 20 • 22 • 24 • 26



**SLC76**

20 • 22 • 24 • 26



**SLC63**

20 • 22 • 24 • 26

Polished Shown





# SLG SERIES



**SLG05**  
Polished Shown

## The Foundation of the Billet Specialties Forged Wheel

Everything you would expect from a forged aluminum wheel. True directional styling, 5 and 6 spoke designs with styles spanning from retro to current trends. Available in 17 - 26 with multiple finish options and big brake applications.



**SLG02**

17 • 18 • 19 • 20 • 22 • 24 • 26



**SLG03**

17 • 18 • 19 • 20 • 22 • 24 • 26



**SLG05**

17 • 18 • 19 • 20 • 22 • 24 • 26



**SLG06**

20 • 22 • 24 • 26



**Hollowpoint**

Available in 6 lug \*  
17 • 18 • 19 • 20 • 22 • 24 • 26



**Diamondback 6**

20 • 22 • 24 • 26





**Twist**

Available in 6 Lug •  
17 • 18 • 19 • 20 • 22 • 24 • 26



**SLG45**

17 • 18 • 19 • 20 • 22 • 24 • 26



**Sweep**

17 • 18 • 19 • 20 • 22 • 24 • 26



**Sweep 6**

20 • 22 • 24 • 26



**SLG60**

17 • 18 • 19 • 20 • 22 • 24 • 26



**Diamondback**

Polished Face with  
Brushed Windows Shown



# BLVD SERIES

**Available up to 28"**

## Big Diameter Billets

Large diameter sizes with extreme custom widths thru 16 inches. These look great on a slammed pickup or an American Classic with Urban Styling. These styles will have your ride standing out from the others. You want Max Lip? We've got you covered. The BLVD Series has 3 available forging profiles to get you there.

- **A, B** Forging profiles for staggered fitments to achieve maximum lip on the rear wheels.
- **R** Reverse Lip center offers even More Lip (Vehicle Modifications may be Required)
- Multiple Finish Options
- Sizes from 20 - 28
- 5 & 6 Lug Styles
- 2 piece welded construction
- 3 piece construction also available

## FORGING PROFILES



## BLVD 63

Brushed Face with  
Polished Windows Shown



## BLVD 93

Brushed Face with  
Polished Windows Shown



Reverse Center Option  
Featuring Max Lip





**BLVD 99**

20 • 22 • 24 • 26 • 28

Titanium Center  
Polished Rim Shown



**BLVD 98**

20 • 22 • 24 • 26 • 28

Brushed Center  
Polished Rim Shown



**BLVD 97**

20 • 22 • 24 • 26 • 28

Polished Shown



**BLVD 96**

20 • 22 • 24 • 26 • 28

Polished Face with  
Brushed Windows Shown



**BLVD 94**

20 • 22 • 24 • 26 • 28

Polished Face with  
Brushed Windows Shown



**BLVD 93**

20 • 22 • 24 • 26 • 28

Brushed Face with  
Polished Windows Shown



**BLVD 92**

20 • 22 • 24 • 26 • 28

Polished Shown



**BLVD 91**

20 • 22 • 24 • 26 • 28

Polished Shown



**BLVD 90**

20 • 22 • 24 • 26 • 28

Polished Shown





**BLVD 89**

20 • 22 • 24 • 26 • 28  
Brushed Face with  
Polished Windows Shown



**BLVD 88**

20 • 22 • 24 • 26 • 28  
Polished Shown



**BLVD 87**

20 • 22 • 24 • 26 • 28  
Brushed Face with  
Polished Windows Shown



**BLVD 83**

20 • 22 • 24 • 26 • 28  
Black Matte Shown



**BLVD 82**

20 • 22 • 24 • 26 • 28  
Polished Shown



**BLVD 81**

20 • 22 • 24 • 26 • 28  
Brushed Face with  
Polished Windows Shown





**BLVD 85**  
Brushed Face with  
Polished Windows shown



**BLVD 86**  
20 • 22 • 24 • 26 • 28  
Brushed Face with  
Polished Windows Shown



**BLVD 85**  
20 • 22 • 24 • 26 • 28  
Brushed Face with  
Polished Windows Shown



**BLVD 84**  
20 • 22 • 24 • 26 • 28  
Brushed Face with  
Polished Windows Shown



**BLVD 78**  
20 • 22 • 24 • 26 • 28  
Polished Gold Gloss Center  
Black Gloss Outer Rim



**BLVD 72**  
20 • 22 • 24 • 26 • 28  
Brushed Face with Polished  
Windows Shown



**BLVD 71**  
20 • 22 • 24 • 26 • 28  
Polished Shown





**BLVD 70**

20 • 22 • 24 • 26 • 28  
Brushed Face with  
Polished Windows Shown



**BLVD 69**

20 • 22 • 24 • 26 • 28  
Polished Shown



**BLVD 68**

20 • 22 • 24 • 26 • 28  
Polished Shown



**BLVD 63**

Brushed Face with  
Polished Windows Shown





## **BLVD 88**

Polished Shown



### **BLVD 67**

20 • 22 • 24 • 26 • 28

Polished Shown



### **BLVD 66**

20 • 22 • 24 • 26 • 28

Brushed Face with  
Polished Windows Shown



### **BLVD 65**

20 • 22 • 24 • 26 • 28

Polished Shown



### **BLVD 64**

20 • 22 • 24 • 26 • 28

Brushed with  
Polished Windows Shown



### **BLVD 63**

20 • 22 • 24 • 26 • 28

Brushed Face with  
Polished Windows Shown



### **BLVD 61**

20 • 22 • 24 • 26 • 28

Polished Shown



# GS SERIES

## Big Diameter Big Lip - Traditional Billet Styling

Throwback styling for the now popular urban market. Large diameter sizes with extreme custom widths thru 16 inches. Featuring multiple forging profiles for staggered fitments to achieve maximum lip on the rear wheels. Hidden lugs and multiple finish options offers you the most impactful wheel designs.



- **A, B** Forging profiles for staggered fitments to achieve maximum lip on the rear wheels.
- **R** Reverse Lip center offers even More Lip (Vehicle Modifications may be Required)
- Multiple Finish Options
- Sizes from 17 • 18 • 19 • 20 • 22 • 24 • 26 • 28
- 2 piece welded construction

## FORGING PROFILES







**GS08**

17 • 18 • 19 • 20 • 22 • 24 • 26 • 28



**GS47**

17 • 18 • 19 • 20 • 22 • 24 • 26 • 28



**GS30**

17 • 18 • 19 • 20 • 22 • 24 • 26 • 28



**GS51**

17 • 18 • 19 • 20 • 22 • 24 • 26 • 28



**GS52**

17 • 18 • 19 • 20 • 22 • 24 • 26 • 28



**GS53**

17 • 18 • 19 • 20 • 22 • 24 • 26 • 28



**GS58**

17 • 18 • 19 • 20 • 22 • 24 • 26 • 28



**GS69**

17 • 18 • 19 • 20 • 22 • 24 • 26 • 28

Visit [BilletSpecialties.com](http://BilletSpecialties.com)  
for the latest styles...



# RACE SERIES

Street Strip and Comp Series wheels are backed by 35 years of wheel manufacturing experience. Our Street Lite and Win Lite wheels are designed to offer true performance for the Street or Strip. If you're looking for a competition wheel for the race track - Look to our Comp Series. All Street Strip and Comp Series wheels are forged and SFI rated.



## STREET LITE

### Standard

15 • 17 • Polished or Black







## Double Beadlock

15 • Polished or Black

## Single Beadlock

15 • 17 • Polished or Black

Billet Specialties, Inc. • ph 866.317.5940 • fx 708.588.7181 • [billetspecialties.com](http://billetspecialties.com)





# STREET LITE 15x10

*Extra Brake Clearance*



## ***Fitments For:***

- 93-02 F-Body
- 05-14 S197 Mustang
- 94-04 Fox Body



**Standard**

**Single Beadlock**



# STREET S550 MUSTANG

## LITE 17x10

*Direct Fit*



### Standard

17 • Polished or Black



### Single Beadlock

17 • Polished or Black







# STREET LITE TRUCK

- 15" & 17" sizes available.
- With or without Beadlock options

### ***Direct Fit Applications For:***

- 71-98 Chevrolet C10/C1500 5 Lug
- 99-17 Chevrolet 1500 6 Lug
- 06-09 Chevrolet Trail Blazer SS 6 Lug  
2WD & AWD

**17 x 4.5  
1 pc. Forged  
15.6 lbs.**





WIN  
LITE

**Standard**  
15 • 17

sfi  
FOUNDRATION  
INC.

**Double Beadlock**  
15 Only

**Single Beadlock**  
15 • 17



# WIN LITE 15x10

*Extra Brake Clearance*

## *Fitments For:*

- 93-02 F-Body
- 05-14 S197 Mustang
- 94-04 Fox Body

sfi SFI FOUNDATION INC.



**Standard**

**Single Beadlock**







**17 x 4.5**  
**Starting at 12.5 Lbs!**



**Caliper Clearance:**

- 1.25" at 2.75" Backspace
- 2" at 2" Backspace

**18 x 5**  
**Starting at 13.8 Lbs!**





**WIN**

**LITE 17x10**

**S550 MUSTANG**

*Direct Fit*



**Single Beadlock**



**Standard**

sfi SFI FOUNDATION INC.



17 x 10 Rear

17 x 4.5 Front





17 x 10 Rear

18 x 5 Front

# WIN DODGE WIDEBODY LITE 17x10 *Direct Fit*



**Single Beadlock**



**Standard**







# DRAG PACK

Direct fit wheels for modern muscle; the Drag Pack wheels offer performance, ease of installation and lightweight for your modern muscle car. Unique Duo-Block construction saves weight while proving superior strength and run out while clearing today's performance brakes. Even more weight savings comes from recessed and pocketed bolt pads and optimized outer rim thickness.

## LATE MODEL APPLICATIONS

**WIN LITE 17X10 Rear**

*Direct Fit*



**Single Beadlock**  
*Starting at 22.4 Lbs!*



**Standard**  
*Starting at 18.6 Lbs!*





## Direct Fit Applications:

- Challenger/Charger/Hellcat/Magnum SRT8
- Cadillac CTS-V 2015+
- Gen 6 Camaro SS & ZL1 2016+
- C7 Corvette Z06 & Gran Sport 2014-2018 \*
- Gen 5 Camaro SS & SL1 2010-2015
- C7 Stingray Corvette 2014-2018 •
- Ford Mustang S550 GT350 & Perf Package 2015+

## WIN LITE 18X5 Front



sfi  
FOUNDATION  
INC.

**13.8 lbs!**

\* Must Use Aftermarket Drag Spindles



# COMP SERIES

Comp Series wheels are designed with the competitive racer in mind. Our mission is to manufacture high quality, high strength lightweight forged race wheels that get you to the Winner's Circle on Sunday! Comp Series wheels are available in either polished or black anodized and meet SFI requirements. Comp 7 Series wheels are only available in black anodized.

## COMP 5 - STANDARD REAR



**15"**  
**Starting at 13 Lbs!**

**Polished or Black**

15 • 16

**16 x 16**  
**15.4 Lbs!**

Comp Series Wheels are not for use on Public Roads & Highways - Race Only







# COMP SERIES

## COMP 5 - DOUBLE BEADLOCK

sfi SFI FOUNDATION INC.



**15"**  
**Starting at 19.8 Lbs!**

**Polished or Black**  
15 • 16

**16 x 16**  
**22.6 Lbs!**

Comp Series Wheels are not for use on Public Roads & Highways - Race Only

Billet Specialties, Inc. • ph 866.317.5940 • fx 708.588.7181 • [billetspecialties.com](http://billetspecialties.com)



# COMP SERIES

## COMP 5 - SPINDLE MOUNT

15 x 3.5 • 17 x 2.125

sfi  
SFI  
FOUNDATION  
INC.

Also Available in Polished



**15 x 3.5**  
**Starting at 8.6 Lbs!**



**17 x 2.125**  
**Starting at 6.5 Lbs!**

## COMP 5 - BOLT ON

15 x 3.5 • 17 x 4.5

Also Available in Polished



**15 x 3.5**  
**Starting at 7.6 Lbs!**



**17 x 4.5**  
**Only 9.8 Lbs!**



# COMP SERIES

## COMP 7 - STANDARD REAR

15 • 16



**15"**  
**Starting at 13.7 Lbs!**

**16 x 16**  
**16.5 Lbs!**

Comp Series Wheels are not for use on Public Roads & Highways - Race Only

Billet Specialties, Inc. • ph 866.317.5940 • fx 708.588.7181 • [billetspecialties.com](http://billetspecialties.com)



# COMP SERIES

## COMP 7 - DOUBLE BEADLOCK

15 • 16

Comp 7 Series wheels are only available in black anodized.



15"

Starting at 19 Lbs!



16 x 16  
23.2 lbs!

sfi  
SFI  
FOUNDATION  
INC.

Comp Series Wheels are not for use on Public Roads & Highways - Race Only





# COMP SERIES

## COMP 7 - SPINDLE MOUNT

15 x 3.5 • 17 x 2.125

sfi  
SFI FOUNDATION  
INC.



**15 x 3.5**  
**Starting at 8.4 Lbs!**



**17 x 2.125**  
**Only 7.6 Lbs!**

## COMP 7 - BOLT ON

15 x 3.5 • 17 x 4.5

Comp 7 Series wheels are only available in black anodized.



**15 x 3.5**  
**Starting at 7.5 Lbs!**



Comp Series Wheels are not for use on Public Roads & Highways - Race Only

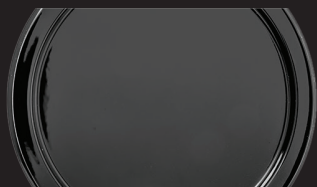
Billet Specialties, Inc. • ph 866.317.5940 • fx 708.588.7181 • billetspecialties.com



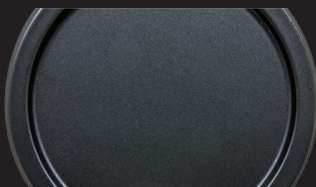
# FINISH OPTIONS

## Standard Finish Options

This is a standard solid powder coat color in gloss or matte sheen



**BLACK GLOSS**  
**SBKG**



**BLACK MATTE**  
**SBKM**



**BRONZE GLOSS**  
**SBRG**



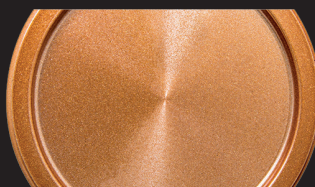
**BRONZE MATTE**  
**SBRM**



**GUNMETAL GLOSS**  
**SGMG**



**GUNMETAL MATTE**  
**SGMM**



**COPPER GLOSS**  
**SCPG**



**COPPER MATTE**  
**SCPM**



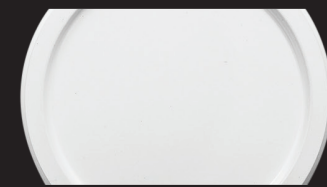
**TITANIUM MATTE**  
**STTM**



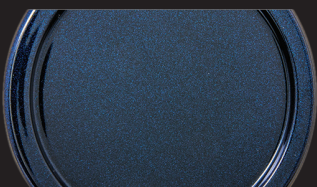
**SILVER GLOSS**  
**SSLG**



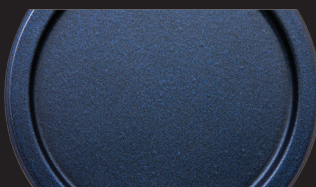
**SILVER MATTE**  
**SSLM**



**WHITE GLOSS**  
**SWHG**



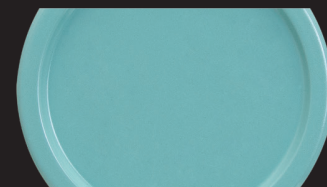
**MIDNIGHT BLUE GLOSS**  
**SMBG**



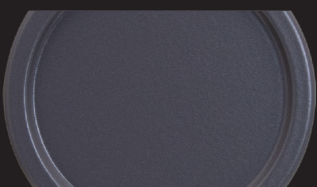
**MIDNIGHT BLUE MATTE**  
**SMBM**



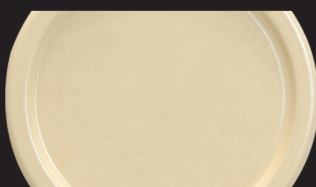
**HOT ROD RED**  
**SHRG**



**SEA FOAM GREEN**  
**SSGG**



**TITAN GRAY**  
**STGG**



**BANANA CREAM**  
**SBCG**

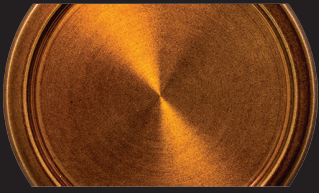
All colors are subject to natural variation.

Powder Coat options do not apply  
to Race Series Wheels.

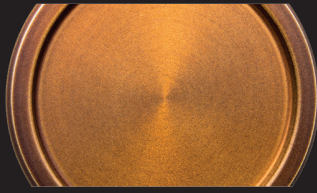


## Premium Brushed Finish Options

The center or rim is brushed finished before a transparent powder is applied



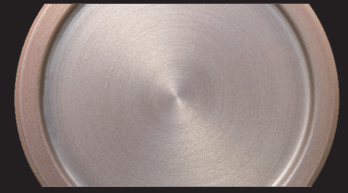
BRUSHED BROWN GLOSS  
**BSBG**



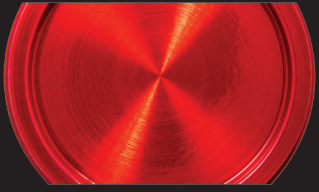
BRUSHED BROWN MATTE  
**BSBM**



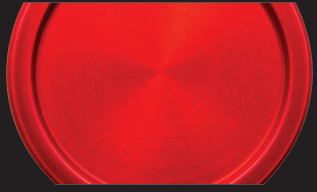
BRUSHED ROSE GOLD GLOSS  
**BRGG**



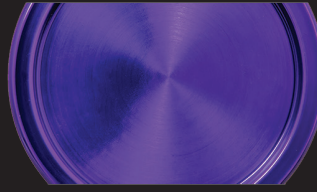
BRUSHED ROSE GOLD MATTE  
**BRGM**



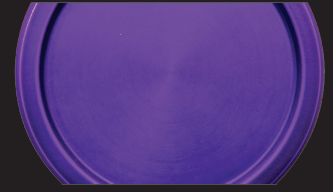
BRUSHED RED GLOSS  
**BRDG**



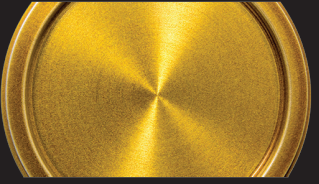
BRUSHED RED MATTE  
**BRDM**



BRUSHED PURPLE GLOSS  
**BPPG**



BRUSHED PURPLE MATTE  
**BPPM**



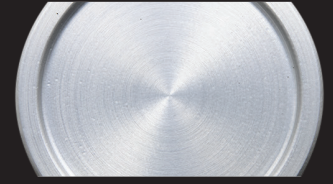
BRUSHED GOLD GLOSS  
**BGDG**



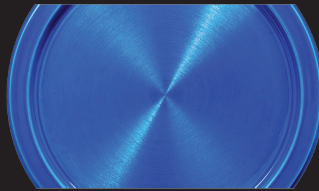
BRUSHED GOLD MATTE  
**BGDM**



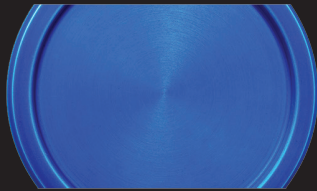
BRUSHED CLEAR GLOSS  
**BCLG**



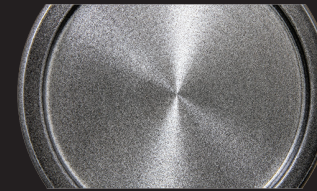
BRUSHED CLEAR MATTE  
**BCLM**



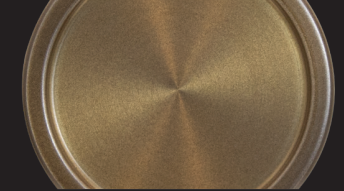
BRUSHED BLUE GLOSS  
**BBLG**



BRUSHED BLUE MATTE  
**BBLM**



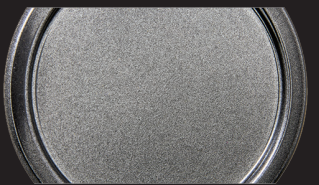
BRUSHED SMOKE GLOSS  
**BSMG**



BRUSHED MAGNESIUM  
**BMGM**

## Premium Polished Finish Options

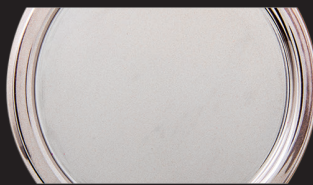
The center or rim is polish finished before a transparent powder is applied



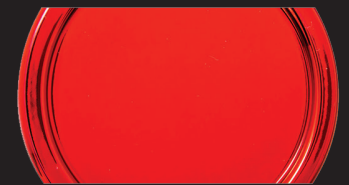
POLISHED SMOKE GLOSS  
**PSMG**



POLISHED BROWN GLOSS  
**PSBG**



POLISHED ROSE GOLD GLOSS  
**PRGG**



POLISHED RED GLOSS  
**PRDG**



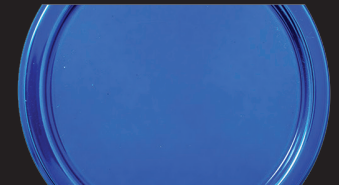
POLISHED PURPLE GLOSS  
**PPPG**



POLISHED GOLD GLOSS  
**PGDG**



POLISHED CLEAR GLOSS  
**PCLG**



POLISHED BLUE GLOSS  
**PBLG**

## Brushed/Polished with Transparent Finish

The center has both brushed & polished surfaces before a transparent powder is applied. Call for more info.

BRUSHED FACE  
WITH POLISHED WINDOWS  
**BFPC**

POLISHED FACE  
WITH BRUSHED WINDOWS  
**PFBC**





**Toll Free: 866-317-5940**  
**WWW.BILLETSPECIALTIES.COM**  
**Tech/International: 708-588-0505**  
**Fax: 708-588-5181**  
**500 Shawmut Avenue**  
**La Grange, IL 60526**

**FOLLOW US**

